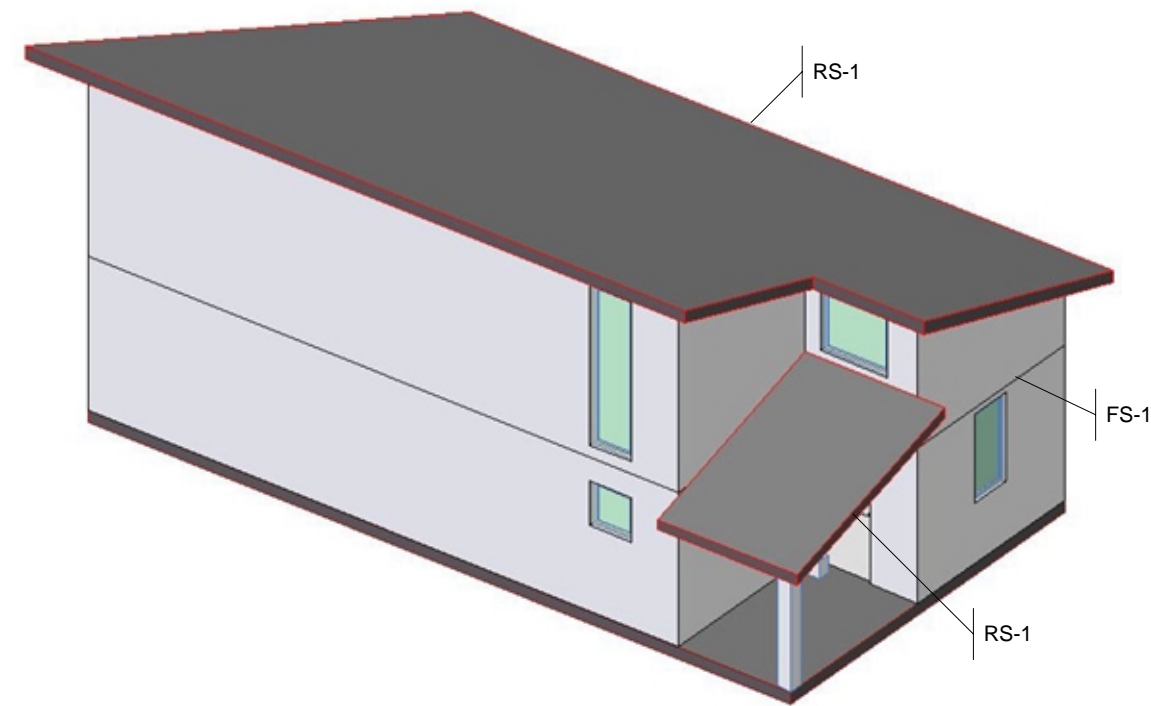
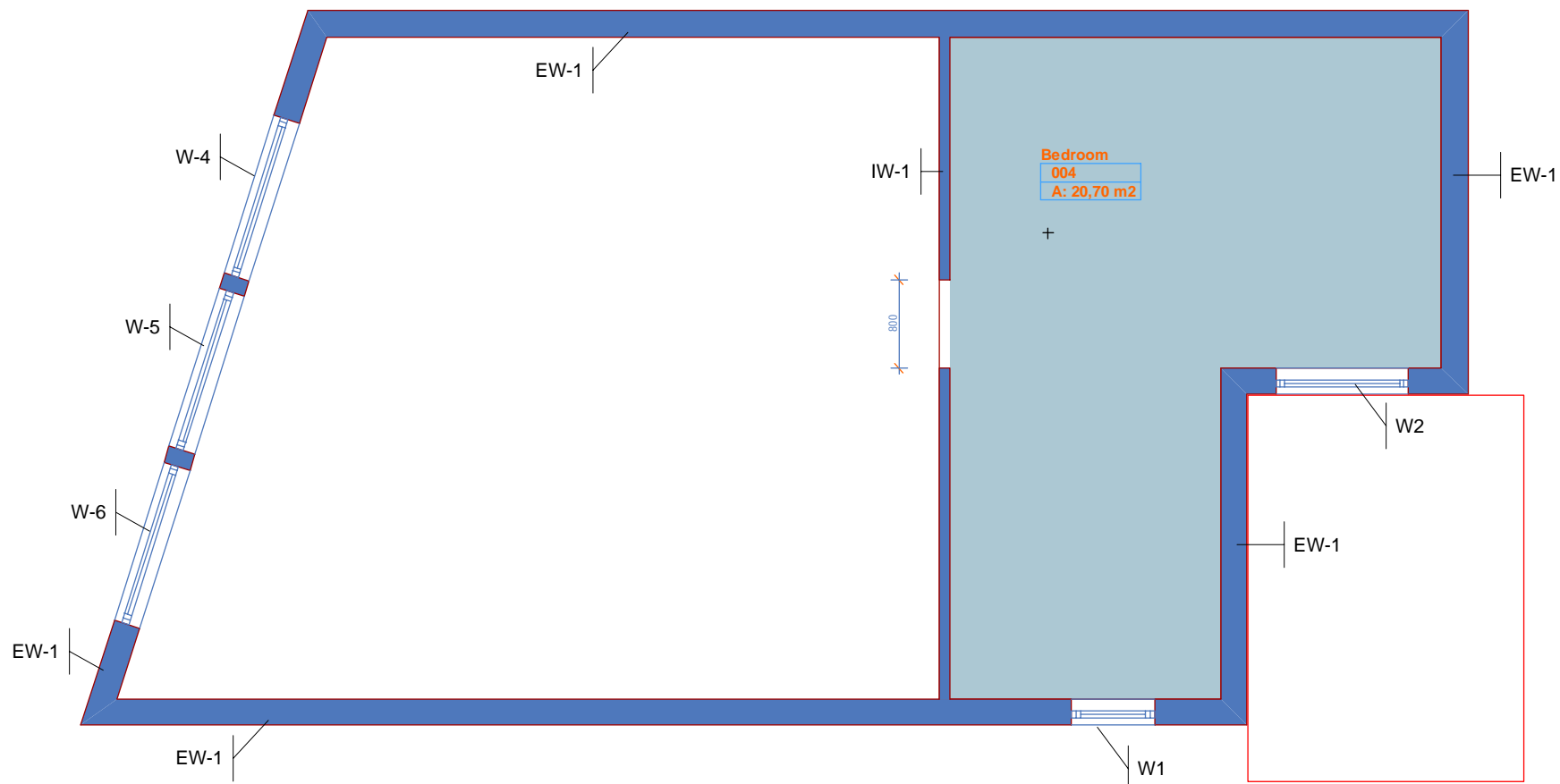
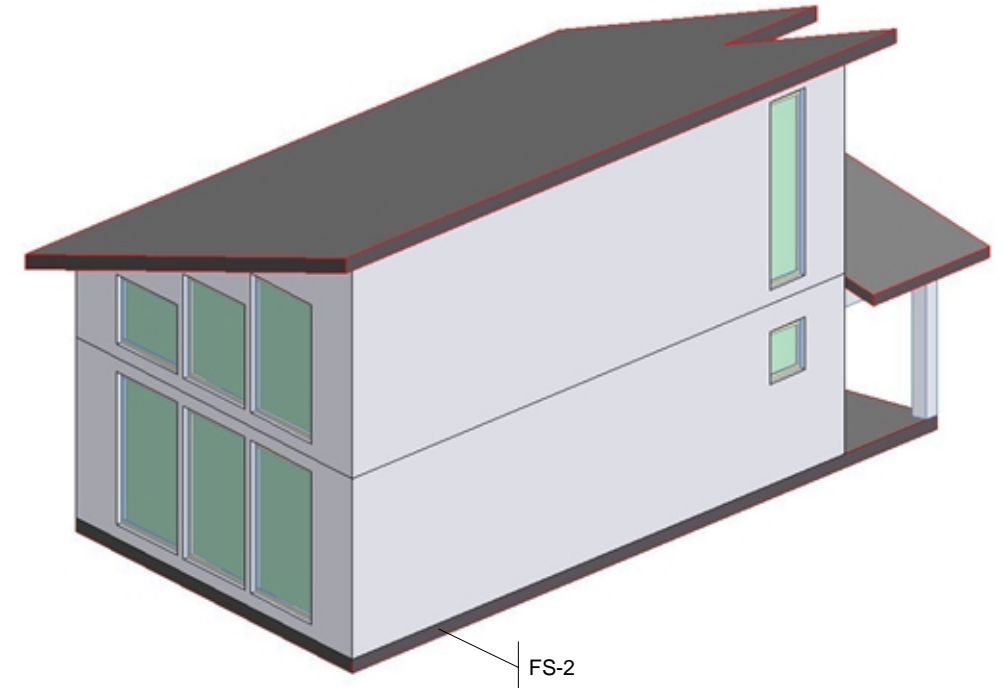
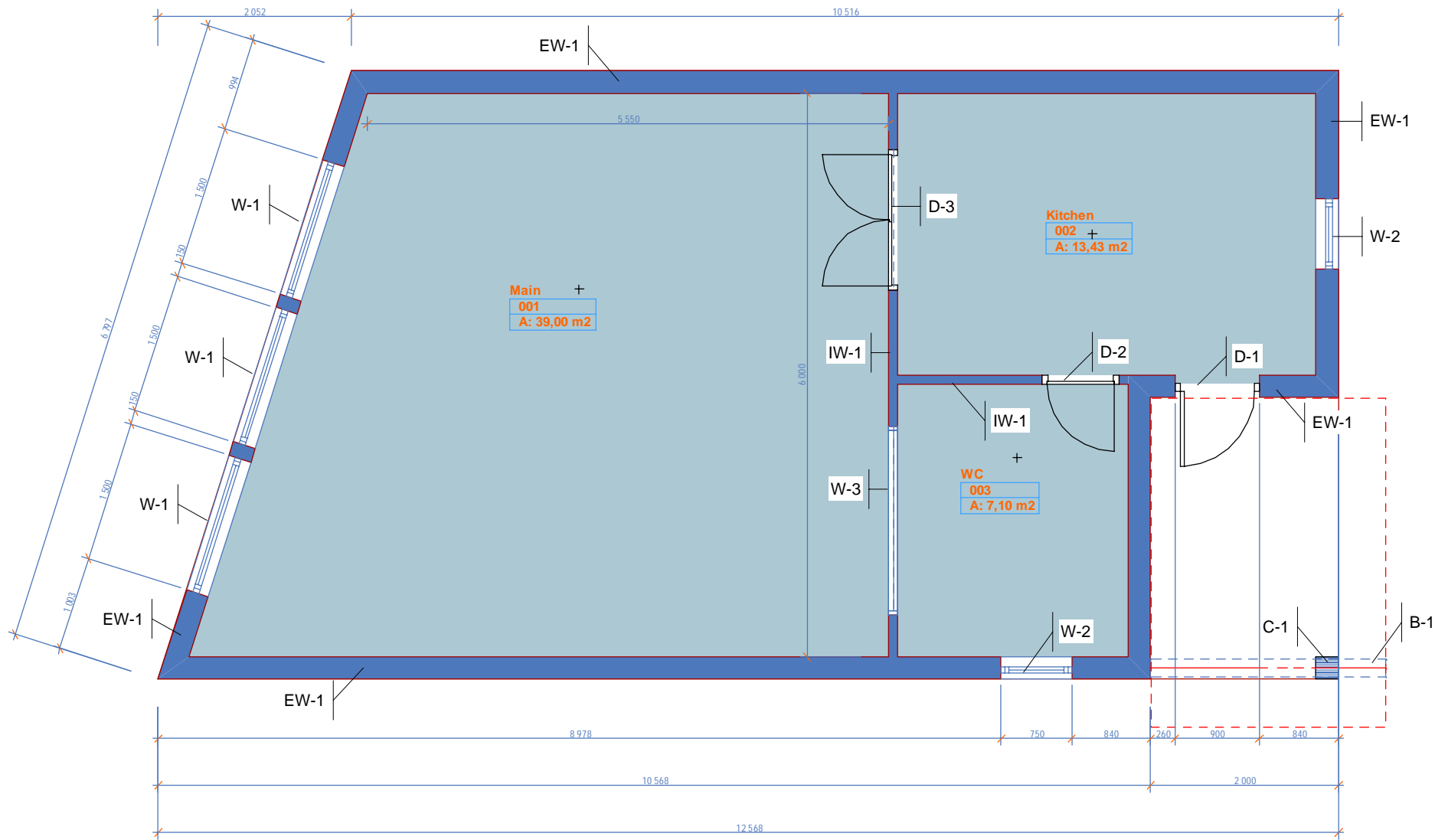


IFC FILE	IFCR2_buildngs_2.ifc	REVISED	21.5.2001
----------	----------------------	---------	-----------



Wall type	int/ext	Component type	Thickness	Height	Length	Total area	Net area	Building storey
EW-1	ext		0,24 m	2,60 m	34,39 m	89,42 m2	70,64 m2	Ground floor
+		Wall segment		2,60 m	2,00 m	5,20 m2		
-		Door		2,10 m	0,95 m	2,00 m2		
+		Wall segment		2,60 m	3,00 m	7,80 m2		
-		Window		1,50 m	0,75 m	1,13 m2		
+		Wall segment		2,60 m	10,00 m	26,00 m2		
-		Window		0,75 m	0,75 m	0,56 m2		
+		Wall segment		2,60 m	10,10 m	26,26 m2		
+		Wall segment		2,60 m	6,29 m	16,36 m2		
-		Window		2,20 m	1,50 m	3,30 m2		
-		Window		2,20 m	1,50 m	3,30 m2		
-		Window		2,20 m	1,50 m	3,30 m2		
+		Wall segment		2,60 m	3,00 m	7,80 m2		
IW-1	int		0,10 m	2,45 m	8,50 m	20,83 m2	9,25 m2	Ground floor
+		Wall segment		2,45 m	2,50 m	6,13 m2		
-		Door		2,10 m	0,81 m	1,70 m2		
+		Wall segment		2,45 m	6,00 m	14,70 m2		
-		Window		0,30 m	2,00 m	0,60 m2		
-		Door		2,10 m	1,50 m	3,15 m2		
EW-1	ext		0,24 m	? m	34,39 m	63,77 m2	48,45 m2	Second floor
+		Wall segment		? m	3,00 m	5,05 m2		
+		Wall segment		? m	2,00 m	2,87 m2		
-		Window		1,20 m	1,25 m	1,50 m2		
+		Wall segment		? m	10,10 m	11,98 m2		
+		Wall segment		? m	3,00 m	7,91 m2		
+		Wall segment		? m	6,29 m	6,98 m2		
-		Window		1,50 m	1,50 m	2,25 m2		
-		Window		2,00 m	1,50 m	3,00 m2		
-		Window		1,00 m	1,50 m	1,50 m2		
+		Wall segment		? m	10,00 m	28,98 m2		
-		Window		2,70 m	0,75 m	2,03 m2		
IW-1	int		0,10 m	1,00 m	5,20 m	5,20 m2	2,20 m2	Second floor
+		Wall segment		1,00 m	3,00 m	3,00 m2		
+		Wall segment		1,00 m	2,20 m	2,20 m2		

Element	Type	int/ext	HwGroup	Wall type	Count	Height	Width	Area	Building storey	Space1	Space2
Door	D-1	ext	HG-2	EW-1	1	2,10 m	0,95 m	2,00 m2	Ground floor		
										2	
Window	W-2	ext	HG-3	EW-1	1	0,75 m	0,75 m	0,56 m2	Ground floor		
										3	
Window	W-2	ext	HG-3	EW-1	1	1,50 m	0,75 m	1,13 m2	Ground floor		
										2	
Window	W-1	ext	HG-3	EW-1	3	2,20 m	1,50 m	3,30 m2	Ground floor		
			HG-3	EW-1						1	
			HG-3	EW-1						1	
			HG-3	EW-1						1	
Door	D-2	int	HG-1	IW-1	1	2,10 m	0,81 m	1,70 m2	Ground floor		
										2	3
Window	W-3	int	HG-4	IW-1	1	0,30 m	2,00 m	0,60 m2	Ground floor		
										1	3
Door	D-3	int	HG-1	IW-1	1	2,10 m	1,50 m	3,15 m2	Ground floor		
										2	1
Window	W2	ext	HG-3	EW-1	1	1,20 m	1,25 m	1,50 m2	Second floor		
										4	
Window	W-5	ext	HG-3	EW-1	1	1,50 m	1,50 m	2,25 m2	Second floor		
										?	
Window	W-6	ext	HG-3	EW-1	1	2,00 m	1,50 m	3,00 m2	Second floor		
										?	
Window	W-4	ext	HG-3	EW-1	1	1,00 m	1,50 m	1,50 m2	Second floor		
										?	
Window	W1	ext	HG-3	EW-1	1	2,70 m	0,75 m	2,03 m2	Second floor		
										4	

Space name	int/ext	Opening type	Total area	Average height	Total perimeter	Height	Width	Opening area	Building storey
Kitchen [2]	int		13,43 m2	2,70 m	15,07 m				Ground floor
		Door				2,10 m	0,95 m	2,00 m2	
		Door				2,10 m	0,81 m	1,70 m2	
		Door				2,10 m	1,50 m	3,15 m2	
		Window				1,50 m	0,75 m	1,13 m2	
Main [1]	int		39,00 m2	7,00 m	25,29 m				Ground floor
		Door				2,10 m	1,50 m	3,15 m2	
		Window				0,30 m	2,00 m	0,60 m2	
		Window				2,20 m	1,50 m	3,30 m2	
		Window				2,20 m	1,50 m	3,30 m2	
		Window				2,20 m	1,50 m	3,30 m2	
WC [3]	int		7,10 m2	2,70 m	10,70 m				Ground floor
		Door				2,10 m	0,81 m	1,70 m2	
		Window				0,75 m	0,75 m	0,56 m2	
		Window				0,30 m	2,00 m	0,60 m2	
Bedroom [4]	int		20,70 m2	4,00 m	20,90 m				Second floor
		Window				1,20 m	1,25 m	1,50 m2	
		Window				2,70 m	0,75 m	2,03 m2	