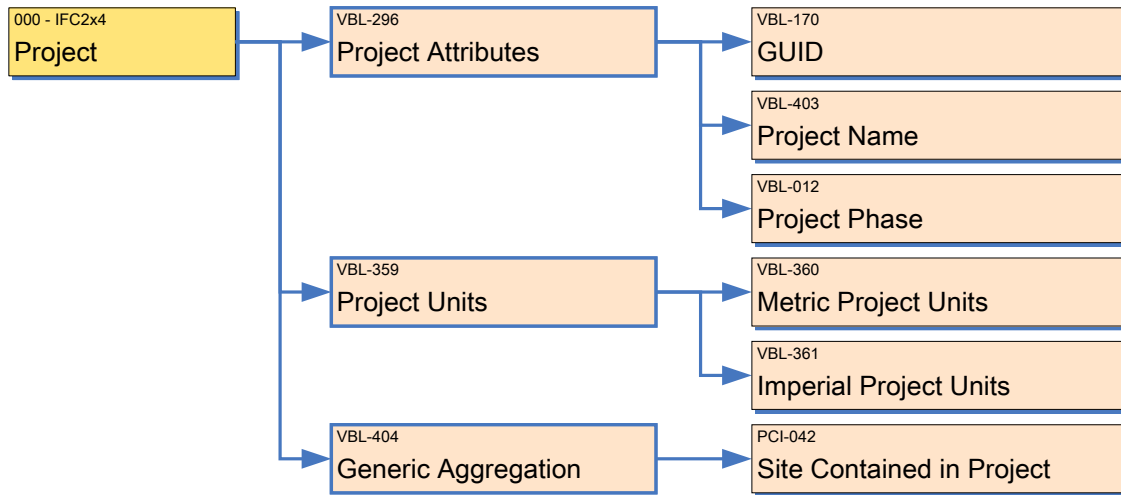


IFC Model View Definition Diagram : [PCI-001] Precast Concrete

| APPLICATION NAME                                  | APP. VERSION  | EXCHANGE TYPE  | DIAGRAM AUTHORS   |
|---|---|--|---|
| Generic   |   | Generic  | Rafael Sacks, Chuck Eastman and Ivan Panushev                                 |
| 000 - IFC2x4<br>Building                          | VBL-411<br>Building Attributes                        | VBL-240<br>Property Set                                | PCI-064<br>Absolute Placement   |
| 000 - IFC2x4<br>Building Storey                   | VBL-413<br>Building Storey Attributes                 | PCI-117<br>Reinforcing Bar Attributes                  | PCI-060<br>Actor Assignment   |
| 000 - IFC2x4<br>Engineered Mesh                   | PCI-053<br>Element Attributes                         | PCI-086<br>Reinforcing Element Property Set Assignment | VBL-416<br>Aggregates Structural Analysis Models                              |
| 000 - IFC2x4<br>Grids                             | PCI-101<br>Embed Geometry Assignment                  | PCI-120<br>Reinforcing Unit Attributes                 | VBL-185<br>Applied Load   |
| 000 - IFC2x4<br>Non-precast Element               | VBL-404<br>Generic Aggregation                        | VBL-203<br>Shape Representation                        | PCI-059<br>Approval Assignment  |
| 000 - IFC2x4<br>Non-precast Element Type          | VBL-268<br>Generic Assignments                        | VBL-310<br>Site Attributes                             | PCI-069<br>Arbitrary Precast Profile  |
| 000 - IFC2x4<br>Precast Blockout                  | VBL-258<br>Generic Associations                       | PCI-013<br>System Serves Building Space                | PCI-070<br>Arbitrary Precast Profile with Voids                               |
| 000 - IFC2x4<br>Precast Embed Type                | ICC-519<br>Generic Geometric Representation           | PCI-012<br>System Serves Building Storey               | VBL-307<br>Area   |
| 000 - IFC2x4<br>Precast Embeds                    | VBL-200<br>Generic Material Association               | PCI-118<br>Tendon Attributes                           | PCI-009<br>Assigns Other Building System                                      |
| 000 - IFC2x4<br>Precast End-to-edge Connection    | VBL-201<br>Generic Object Placement                   | PCI-112<br>Tendon Debonding Attributes                 | PCI-008<br>Assigns Precast Facade System                                      |
| 000 - IFC2x4<br>Precast End-to-end Connection     | PCI-087<br>Generic Shape Representation               | PCI-108<br>Transverse Bar Attributes                   | PCI-007<br>Assigns Precast Structural System                                  |
| 000 - IFC2x4<br>Precast Joint                     | VBL-085<br>Grid Attributes                            |  | PCI-085<br>Blockout Placement   |
| 000 - IFC2x4<br>Precast Joint Type                | PCI-107<br>Longitudinal Bar Attributes                |  | VBL-504<br>Building Contained in Site   |
| 000 - IFC2x4<br>Precast Piece                     | PCI-096<br>Mechanical Attributes                      |  | VBL-412<br>Building Name  |
| 000 - IFC2x4<br>Precast Piece Type                | PCI-081<br>Piece Type Geometry Assignment             |  | PCI-044<br>Building Storey Contained in Building                              |
| 000 - IFC2x4<br>Precast Projection                | PCI-083<br>Precast Blockout Attributes                |  | VBL-414<br>Building Storey Name   |
| 000 - IFC2x4<br>Precast Seam Connection           | PCI-071<br>Precast Component Assignment               |  | PCI-110<br>Coating Material Properties  |
| 000 - IFC2x4<br>Precast Slab                      | PCI-134<br>Precast Connection Attributes              |  | PCI-097<br>Component Property Set Assignment                                  |
| 000 - IFC2x4<br>Project                           | PCI-137<br>Precast Connection Element Assignment      |  | PCI-095<br>Condition  |
| 000 - IFC2x4<br>Rebar                             | PCI-100<br>Precast Embed Attributes                   |  | VBL-172<br>Description  |
| 000 - IFC2x4<br>Rebar Cage                        | PCI-102<br>Precast Embed Type Attributes              |  | VBL-237<br>Element Quantity   |
| 000 - IFC2x4<br>Reinforcement Element Aggregation | PCI-078<br>Precast Finish Assignment                  |  | PCI-054<br>Element Type Assignment  |
| 000 - IFC2x3<br>Site                              | PCI-061<br>Precast Piece Material Association         |  | PCI-098<br>Embed Type Assignment  |
| 000 - IFC2x4<br>Standard Mesh                     | PCI-138<br>Precast Piece Structural Member Assignment |  | PCI-099<br>Embed Type Geometry  |
| 000 - IFC2x4<br>Tendon                            | PCI-080<br>Precast Piece Type Attributes              |  | PCI-068<br>Extruded Geometry  |
|   | PCI-139<br>Precast Point Connection Structural Model  |  | PCI-066<br>Generic Brep Shape Geometry  |
|   | PCI-145<br>Precast Projection Attributes              |  | PCI-050<br>Grid Axis Assignment   |
|   | PCI-055<br>Precast Property Set Assignment            |  | PCI-047<br>Grid Name  |
|   | PCI-143<br>Precast Seam Connection Structural Model   |  | PCI-048<br>Grid Representation  |
|   | PCI-091<br>Production Attributes                      |  | PCI-049<br>Grid Spatial Structure Containment                                 |
|   | VBL-296<br>Project Attributes                         |  | VBL-170<br>GUID   |
|   | VBL-359<br>Project Units                              |  | VBL-361<br>Imperial Project Units   |
|   |   |  | VBL-265<br>Material Name  |
|   |   |  | PCI-130<br>Mesh Length  |
|   |   |  | PCI-131<br>Mesh Width   |
|   |   |  | VBL-360<br>Metric Project Units   |
|   |   |  | VBL-171<br>Name   |
|   |   |  | VBL-013<br>Owner and Status Information                                       |
|   |   |  | PCI-052<br>Placement Relative to Grid   |
|   |   |  | PCI-074<br>Precast Blockout Assignment  |
|   |   |  | PCI-136<br>Precast Connection Component Assignment                            |
|   |   |  | PCI-077<br>Precast Design Criteria  |
|   |   |  | PCI-073<br>Precast Embed Assignment   |
|   |   |  | PCI-141<br>Precast End-to-edge Connection Geometry                            |
|   |   |  | PCI-135<br>Precast End-to-end Connection Geometry                             |
|   |   |  | PCI-057<br>Precast Fabrication Attributes                                     |
|   |   |  | PCI-079<br>Precast Finish   |
|   |   |  | PCI-056<br>Precast General Attributes   |
|   |   |  | PCI-147<br>Precast Joint Attributes   |
|   |   |  | PCI-148<br>Precast Joint Element Assignment                                   |
|   |   |  | PCI-149<br>Precast Joint Location   |
|   |   |  | PCI-150<br>Precast Joint Type Assignment                                      |
|   |   |  | PCI-151<br>Precast Joint Type Attributes                                      |
|   |   |  | PCI-152<br>Precast Joint Type Profiling Geometry                              |
|   |   |  | PCI-062<br>Precast Piece Containment  |
|   |   |  | PCI-067<br>Precast Piece Mark   |
|   |   |  | PCI-140<br>Precast Point Connection Reaction                                  |
|   |   |  | PCI-146<br>Precast Projection Assignment                                      |
|   |   |  | PCI-072<br>Precast Rebar Assignment   |
|   |   |  | PCI-142<br>Precast Seam Connection Location                                   |
|   |   |  | PCI-144<br>Precast Seam Connection Reaction                                   |
|   |   |  | PCI-040<br>Precast Slab Aggregation   |
|   |   |  | PCI-092<br>Production Control Number  |
|   |   |  | VBL-403<br>Project Name   |
|   |   |  | PCI-010<br>Pset_Precast_Building_Design_Criteria                              |
|   |   |  | PCI-113<br>Rebar Association to Engineered Mesh                               |
|   |   |  | PCI-114<br>Rebar Association to Standard Mesh                                 |
|   |   |  | PCI-111<br>Rebar Bending Attributes   |
|   |   |  | PCI-088<br>Rebar Extruded Shape Geometry                                      |
|   |   |  | PCI-103<br>Reinforcing Element Aggregation Association to Rebar Cage          |
|   |   |  | PCI-104<br>Reinforcing Element Association to Reinforcing Element Aggregation |
|   |   |  | PCI-133<br>Reinforcing Mesh Attributes  |
|   |   |  | PCI-090<br>Reinforcing Unit Association to Piece                              |
|   |   |  | PCI-063<br>Relative Placement   |
|   |   |  | PCI-042<br>Site Contained in Project  |
|   |   |  | ICC-468<br>Site Curve 2D  |
|   |   |  | VBL-410<br>Site Name  |
|   |   |  | PCI-045<br>Space Contained in Building  |
|   |   |  | PCI-046<br>Space Contained in Building Storey                                 |
|   |   |  | PCI-109<br>Steel Material Properties  |
|   |   |  | PCI-094<br>Supplier   |
|   |   |  | PCI-093<br>Surface Treatments   |
|   |   |  | PCI-058<br>System Piece Aggregation   |
|   |   |  | PCI-126<br>Tendon Anchorage Slip  |
|   |   |  | PCI-128<br>Tendon Debonding Length  |
|   |   |  | PCI-129<br>Tendon Debonding Material  |
|   |   |  | PCI-127<br>Tendon Debonding Relative Placement                                |
|   |   |  | PCI-089<br>Tendon Extruded Shape Geometry                                     |
|   |   |  | PCI-124<br>Tendon Friction Coefficient  |
|   |   |  | PCI-125<br>Tendon Min Curvature Radius  |
|   |   |  | PCI-123<br>Tendon Prestress   |
|   |   |  | PCI-122<br>Tendon Tension Force   |
|   |   |  | VBL-308<br>Volume   |

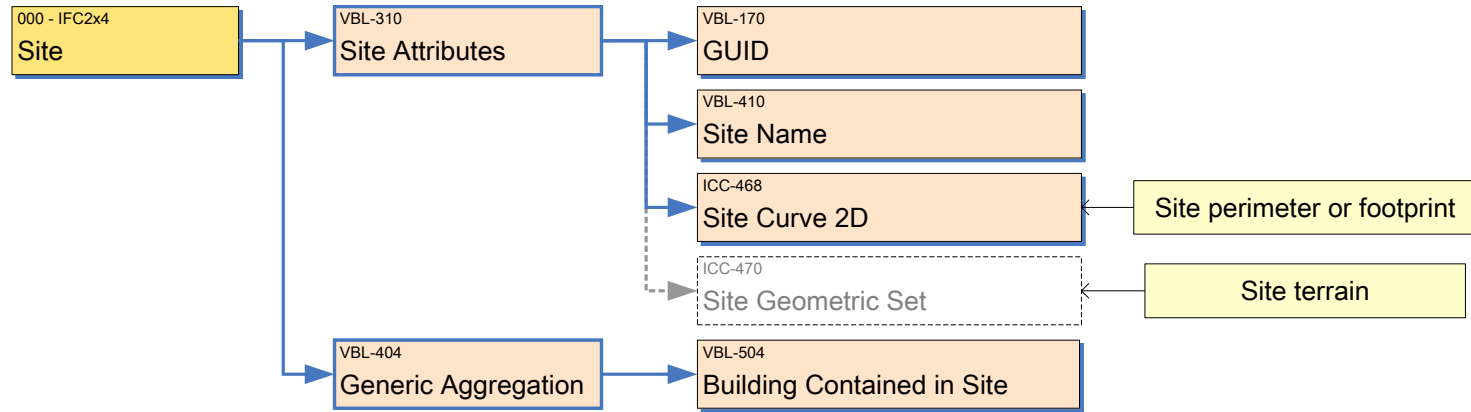
# IFC Model View Definition Diagram : Project IFC2x4

| VIEW ID | VIEW NAME        | APPLICATION NAME | APP. VERSION | EXCHANGE TYPE | DIAGRAM STATUS | DIAGRAM VERSION | DIAGRAM DATE | DIAGRAM AUTHORS                               |
|---------|------------------|------------------|--------------|---------------|----------------|-----------------|--------------|---|
| PCI-001 | Precast Concrete | Generic          |              | Generic       | Proposal       | 4               | 12-Jan-10    | Rafael Sacks, Chuck Eastman and Ivan Panushev |



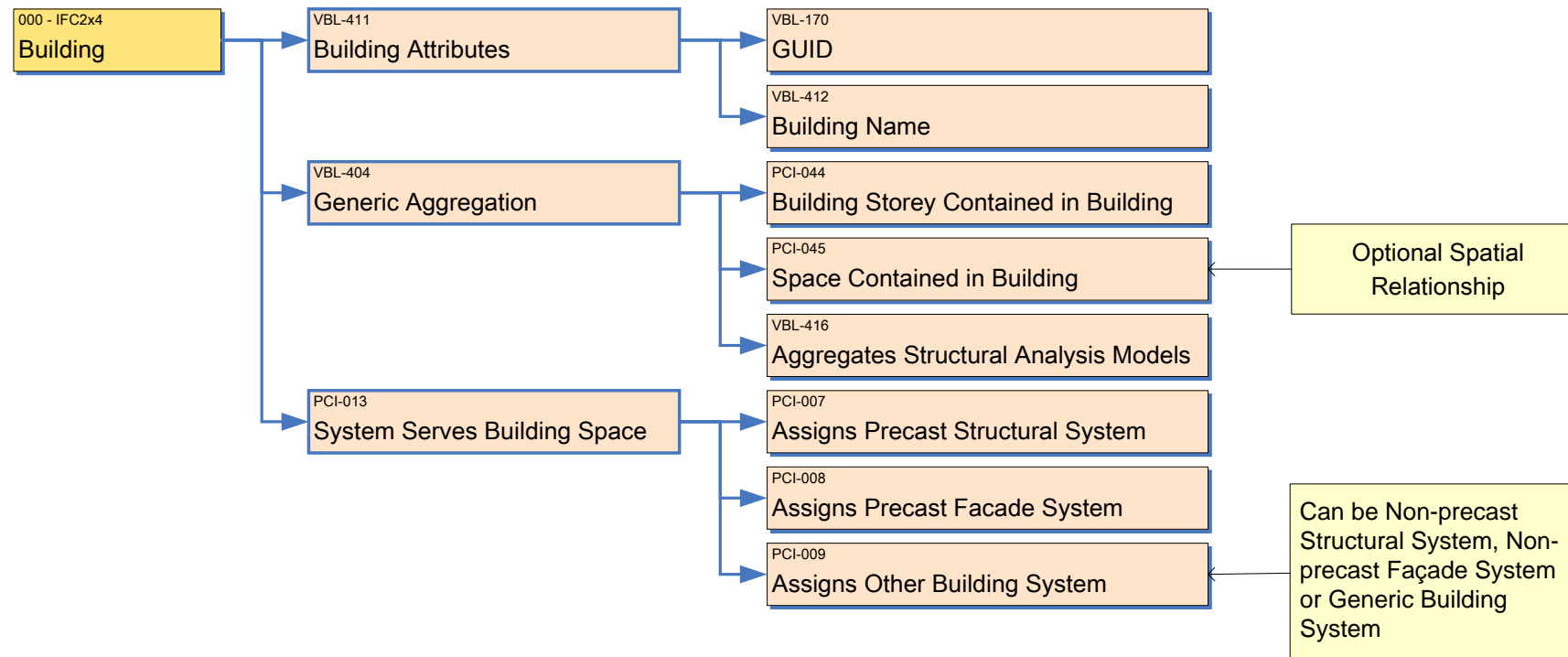
# IFC Model View Definition Diagram : Site IFC2x4

| VIEW ID | VIEW NAME        | APPLICATION NAME | APP. VERSION | EXCHANGE TYPE | DIAGRAM STATUS | DIAGRAM VERSION | DIAGRAM DATE | DIAGRAM AUTHORS                               |
|---------|------------------|------------------|--------------|---------------|----------------|-----------------|--------------|---|
| PCI-001 | Precast Concrete | Generic          |              | Generic       | Proposal       | 4               | 12-Jan-10    | Rafael Sacks, Chuck Eastman and Ivan Panushev |



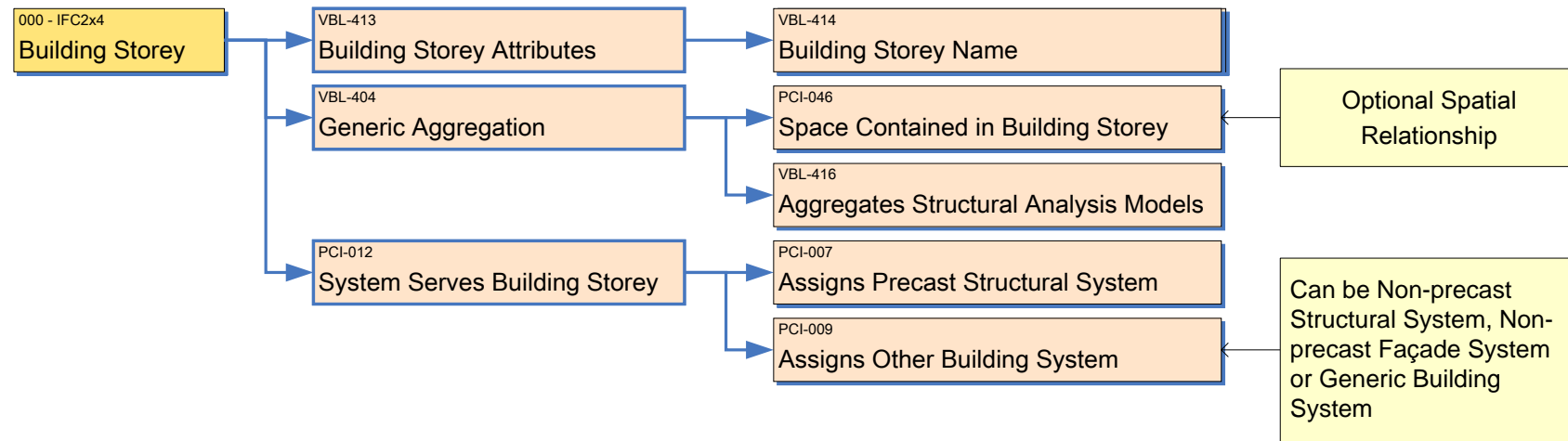
IFC Model View Definition Diagram : Building IFC2x4

| VIEW ID | VIEW NAME        | APPLICATION NAME | APP. VERSION | EXCHANGE TYPE | DIAGRAM STATUS | DIAGRAM VERSION | DIAGRAM DATE | DIAGRAM AUTHORS                               |
|---------|------------------|------------------|--------------|---------------|----------------|-----------------|--------------|---|
| PCI-001 | Precast Concrete | Generic          |              | Generic       | Proposal       | 4               | 12-Jan-10    | Rafael Sacks, Chuck Eastman and Ivan Panushev |



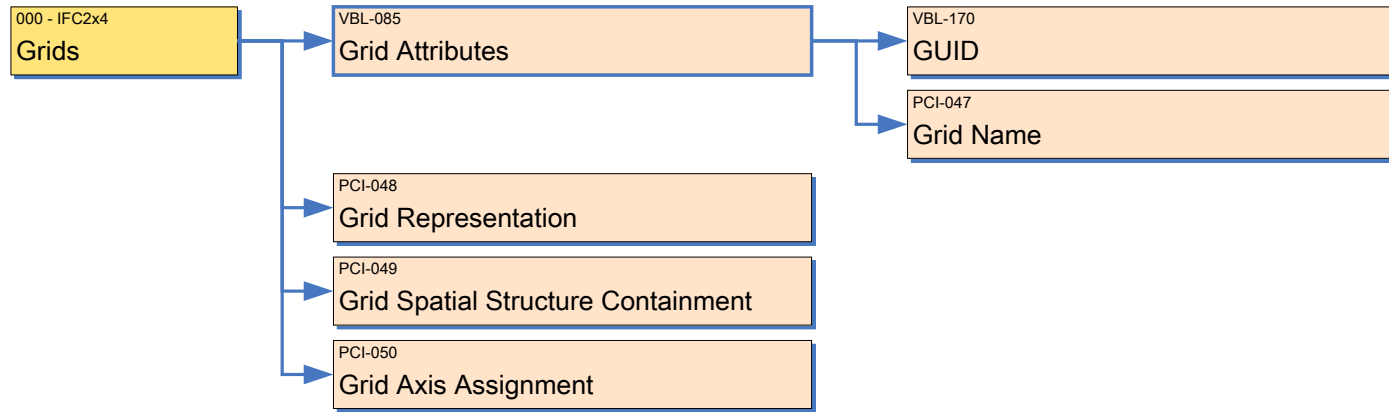
IFC Model View Definition Diagram : Building Storey IFC2x4

| VIEW ID | VIEW NAME        | APPLICATION NAME | APP. VERSION | EXCHANGE TYPE | DIAGRAM STATUS | DIAGRAM VERSION | DIAGRAM DATE | DIAGRAM AUTHORS                               |
|---------|------------------|------------------|--------------|---------------|----------------|-----------------|--------------|---|
| PCI-001 | Precast Concrete | Generic          |              | Generic       | Proposal       | 4               | 12-Jan-10    | Rafael Sacks, Chuck Eastman and Ivan Panushev |



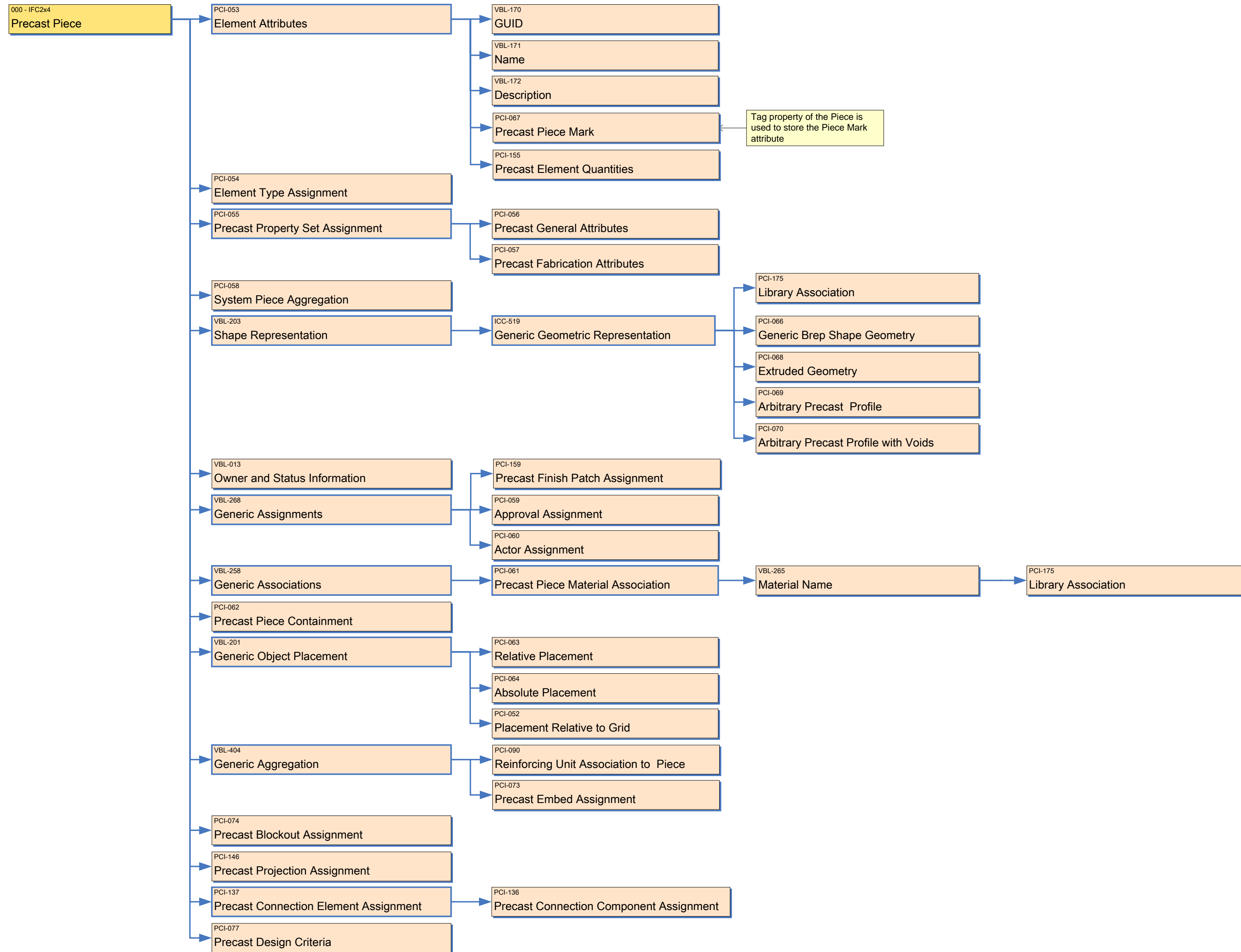
# IFC Model View Definition Diagram : Grids IFC2x4

| VIEW ID | VIEW NAME        | APPLICATION NAME | APP. VERSION | EXCHANGE TYPE | DIAGRAM STATUS | DIAGRAM VERSION | DIAGRAM DATE | DIAGRAM AUTHORS                               |
|---------|------------------|------------------|--------------|---------------|----------------|-----------------|--------------|---|
| PCI-001 | Precast Concrete | Generic          |              | Generic       | Proposal       | 4               | 12-Jan-10    | Rafael Sacks, Chuck Eastman and Ivan Panushev |



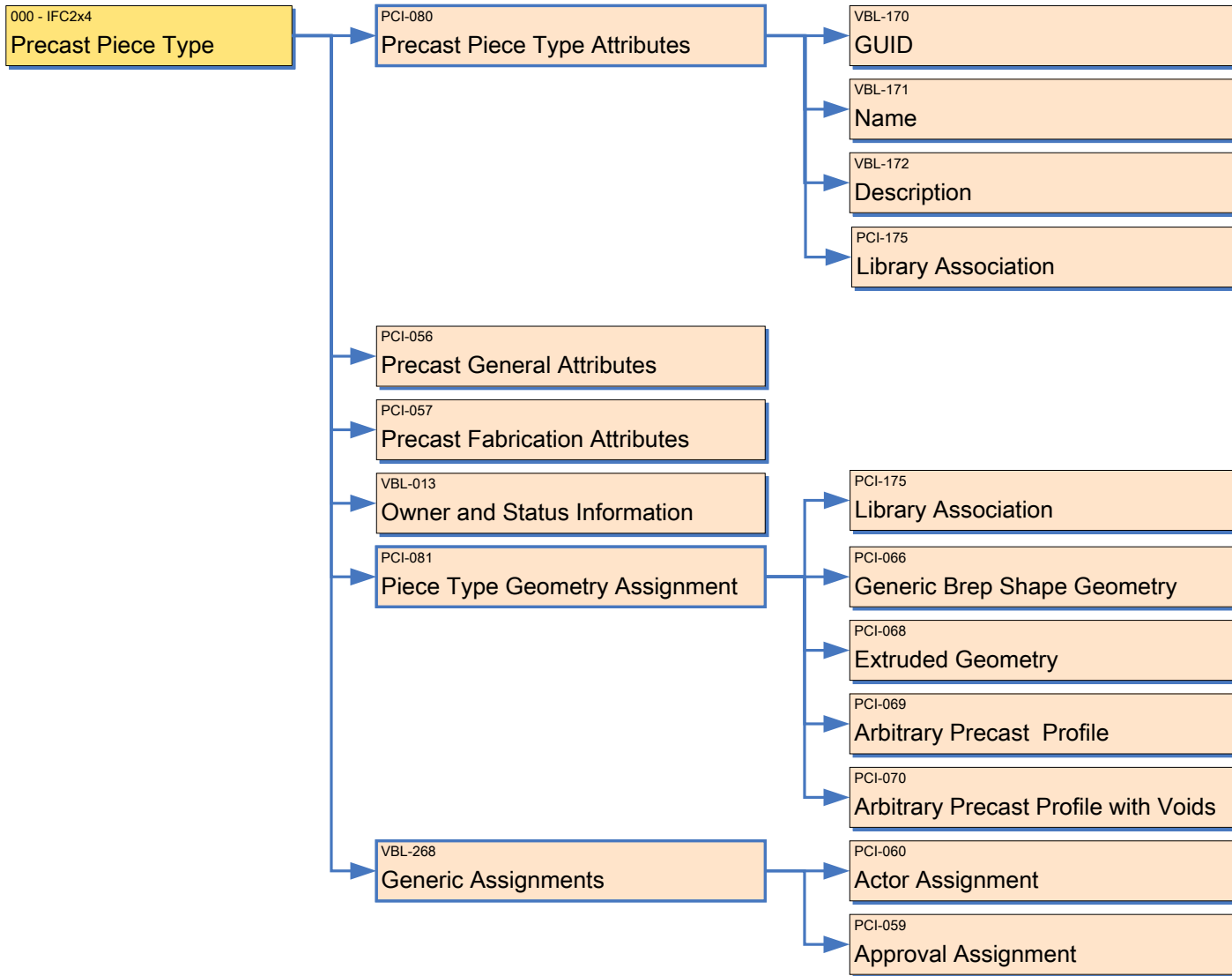
IFC Model View Definition Diagram : Precast Piece IFC2x4

| VIEW ID | VIEW NAME        | APPLICATION NAME | APP. VERSION | EXCHANGE TYPE | DIAGRAM STATUS | DIAGRAM VERSION | DIAGRAM DATE | DIAGRAM AUTHORS                               |
|---------|------------------|------------------|--------------|---------------|----------------|-----------------|--------------|---|
| PCI-001 | Precast Concrete | Generic          |              | Generic       | Proposal       | 4               | 12-Jan-10    | Rafael Sacks, Chuck Eastman and Ivan Panushev |



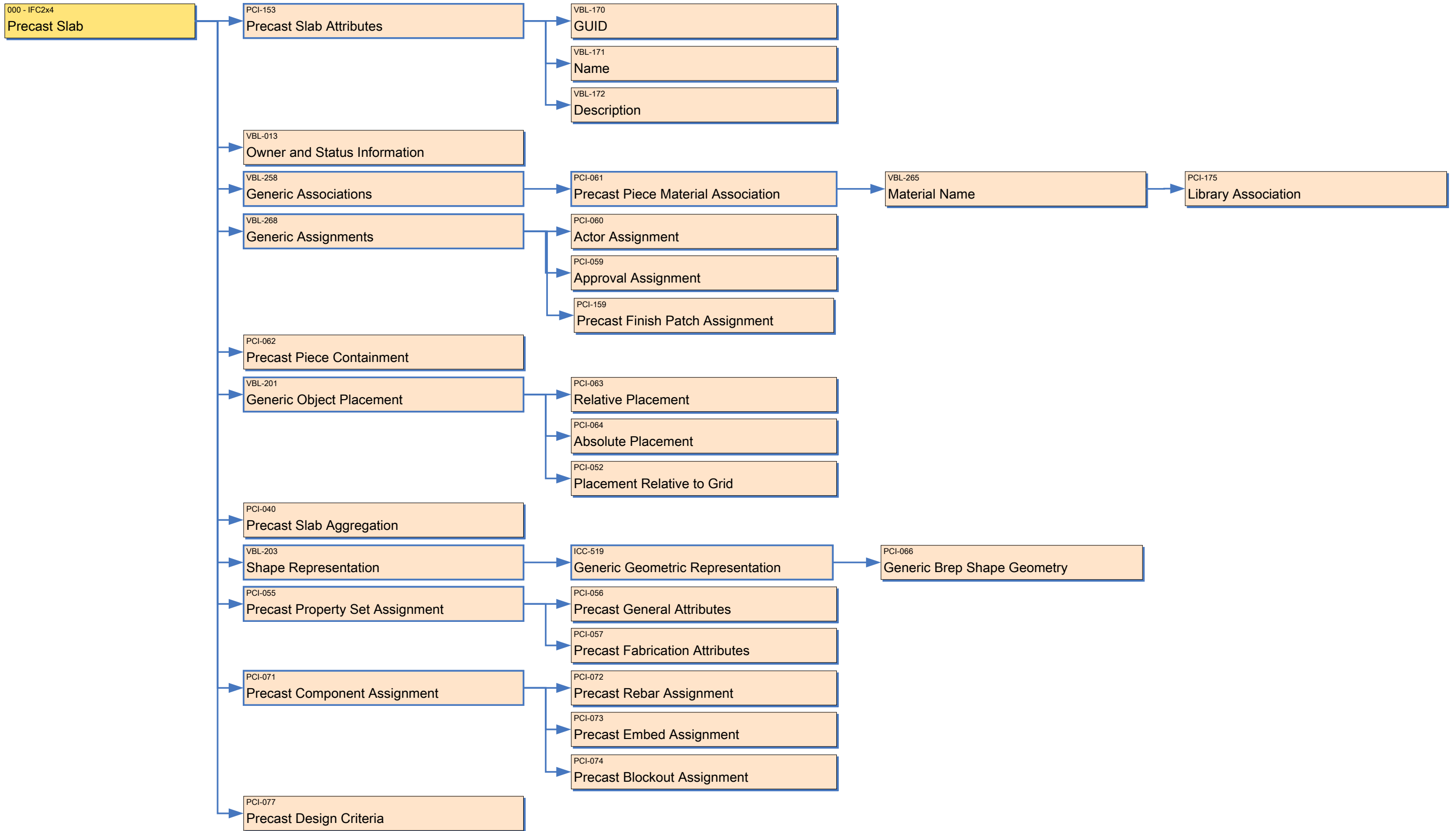
IFC Model View Definition Diagram : Precast Piece Type IFC2x4

| VIEW ID | VIEW NAME        | APPLICATION NAME | APP. VERSION | EXCHANGE TYPE | DIAGRAM STATUS | DIAGRAM VERSION | DIAGRAM DATE | DIAGRAM AUTHORS                               |
|---------|------------------|------------------|--------------|---------------|----------------|-----------------|--------------|---|
| PCI-001 | Precast Concrete | Generic          |              | Generic       | Proposal       | 4               | 12-Jan-10    | Rafael Sacks, Chuck Eastman and Ivan Panushev |



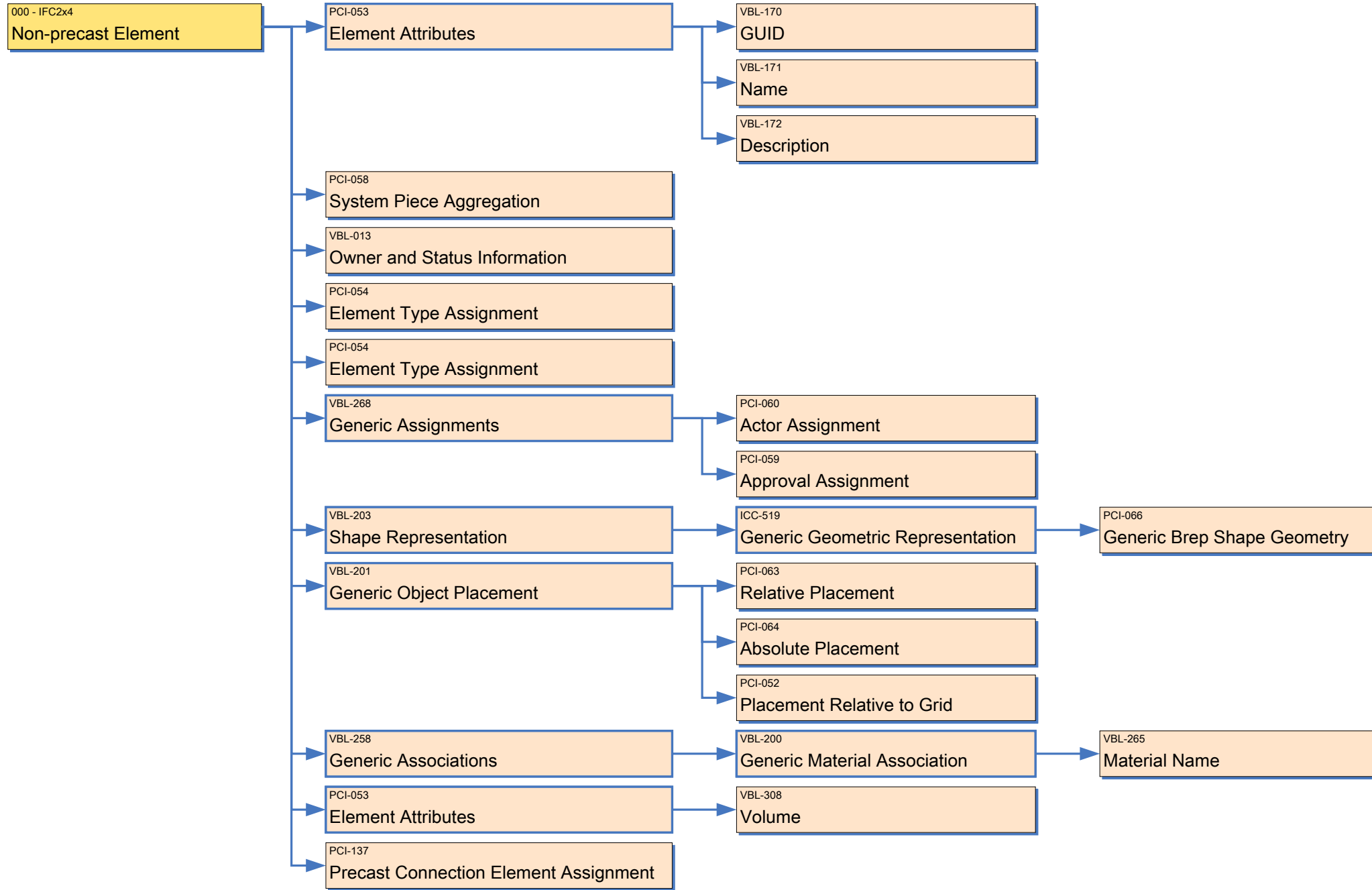
IFC Model View Definition Diagram : Precast Slab IFC2x4

| VIEW ID | VIEW NAME        | APPLICATION NAME | APP. VERSION | EXCHANGE TYPE | DIAGRAM STATUS | DIAGRAM VERSION | DIAGRAM DATE | DIAGRAM AUTHORS                               |
|---------|------------------|------------------|--------------|---------------|----------------|-----------------|--------------|---|
| PCI-001 | Precast Concrete | Generic          |              | Generic       | Proposal       | 4               | 12-Jan-10    | Rafael Sacks, Chuck Eastman and Ivan Panushev |



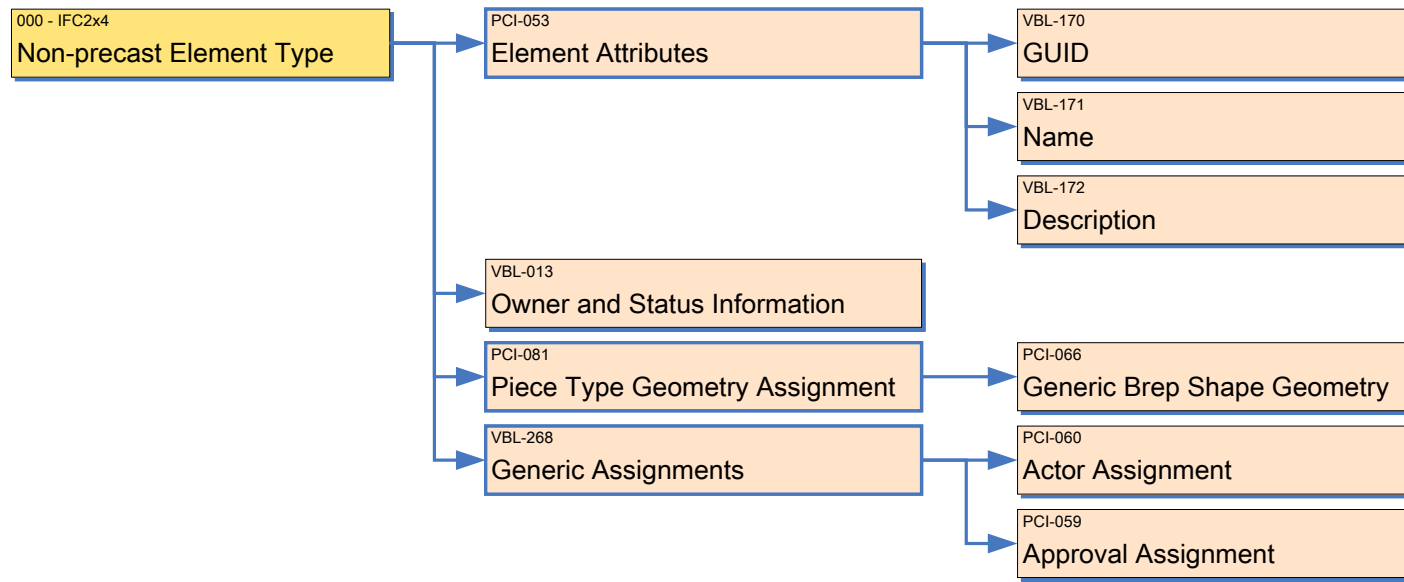
IFC Model View Definition Diagram : Non-precaster Element IFC2x4

| VIEW ID | VIEW NAME        | APPLICATION NAME | APP. VERSION | EXCHANGE TYPE | DIAGRAM STATUS | DIAGRAM VERSION | DIAGRAM DATE | DIAGRAM AUTHORS                               |
|---------|------------------|------------------|--------------|---------------|----------------|-----------------|--------------|---|
| PCI-001 | Precast Concrete | Generic          |              | Generic       | Proposal       | 4               | 12-Jan-10    | Rafael Sacks, Chuck Eastman and Ivan Panushev |



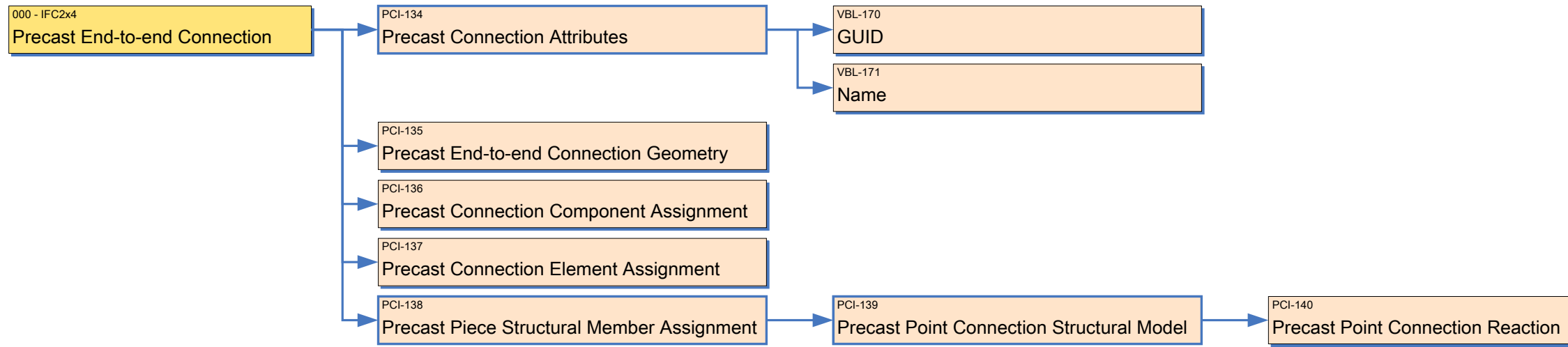
# IFC Model View Definition Diagram : Non-precaster Element Type IFC2x4

| VIEW ID | VIEW NAME        | APPLICATION NAME | APP. VERSION | EXCHANGE TYPE | DIAGRAM STATUS | DIAGRAM VERSION | DIAGRAM DATE | DIAGRAM AUTHORS                               |
|---------|------------------|------------------|--------------|---------------|----------------|-----------------|--------------|---|
| PCI-001 | Precast Concrete | Generic          |              | Generic       | Proposal       | 4               | 12-Jan-10    | Rafael Sacks, Chuck Eastman and Ivan Panushev |



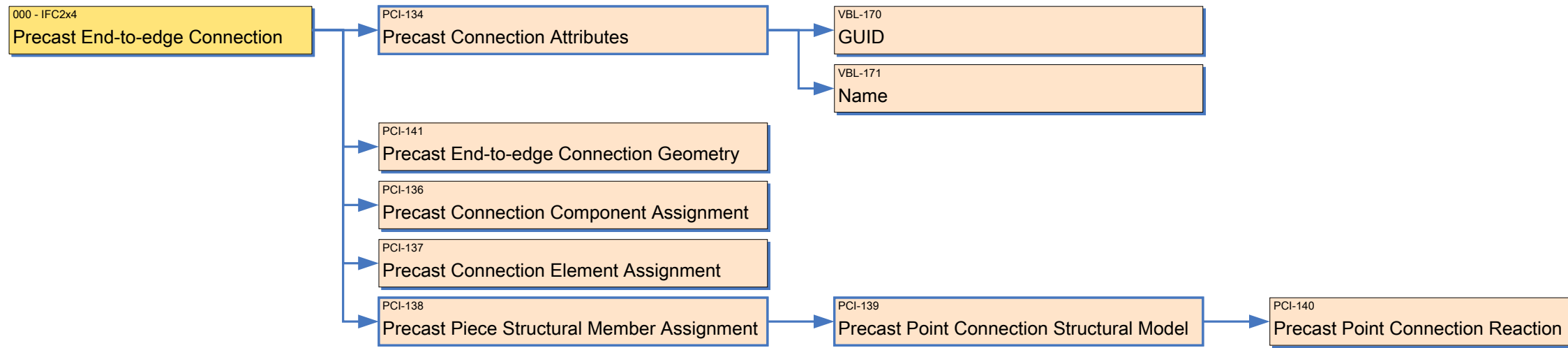
# IFC Model View Definition Diagram : Precast End-to-end Connection IFC2x4

| VIEW ID | VIEW NAME        | APPLICATION NAME | APP. VERSION | EXCHANGE TYPE | DIAGRAM STATUS | DIAGRAM VERSION | DIAGRAM DATE | DIAGRAM AUTHORS                               |
|---------|------------------|------------------|--------------|---------------|----------------|-----------------|--------------|---|
| PCI-001 | Precast Concrete | Generic          |              | Generic       | Proposal       | 4               | 12-Jan-10    | Rafael Sacks, Chuck Eastman and Ivan Panushev |



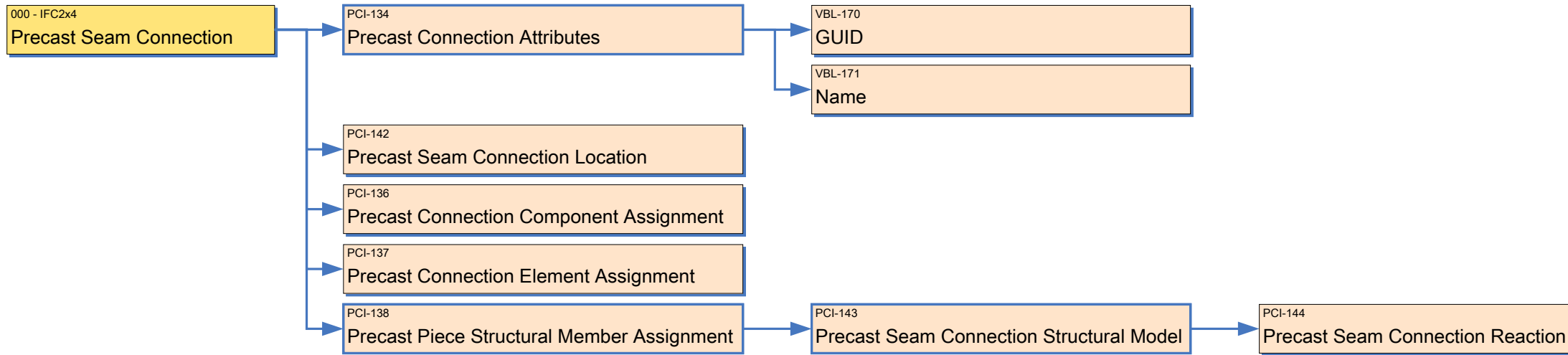
# IFC Model View Definition Diagram : Precast End-to-edge Connection IFC2x4

| VIEW ID | VIEW NAME        | APPLICATION NAME | APP. VERSION | EXCHANGE TYPE | DIAGRAM STATUS | DIAGRAM VERSION | DIAGRAM DATE | DIAGRAM AUTHORS                               |
|---------|------------------|------------------|--------------|---------------|----------------|-----------------|--------------|---|
| PCI-001 | Precast Concrete | Generic          |              | Generic       | Proposal       | 4               | 12-Jan-10    | Rafael Sacks, Chuck Eastman and Ivan Panushev |



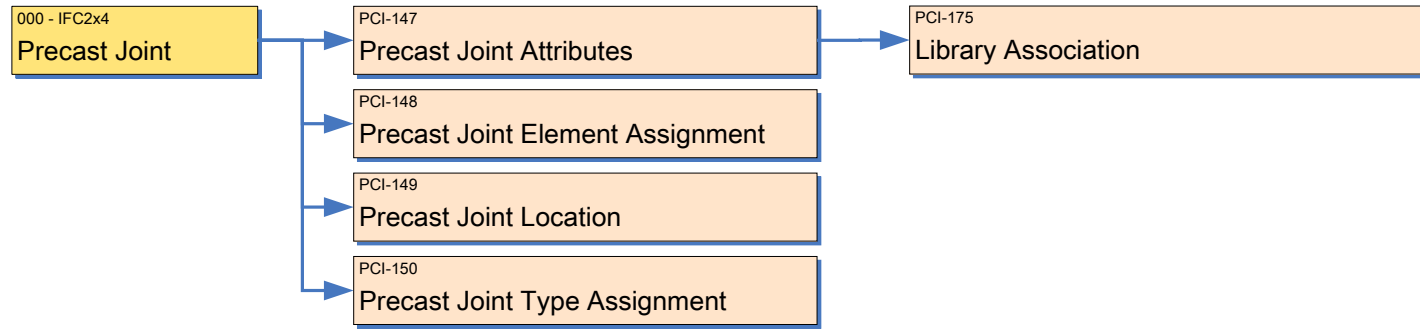
# IFC Model View Definition Diagram : Precast Seam Connection IFC2x4

| VIEW ID | VIEW NAME        | APPLICATION NAME | APP. VERSION | EXCHANGE TYPE | DIAGRAM STATUS | DIAGRAM VERSION | DIAGRAM DATE | DIAGRAM AUTHORS                               |
|---------|------------------|------------------|--------------|---------------|----------------|-----------------|--------------|---|
| PCI-001 | Precast Concrete | Generic          |              | Generic       | Proposal       | 4               | 12-Jan-10    | Rafael Sacks, Chuck Eastman and Ivan Panushev |



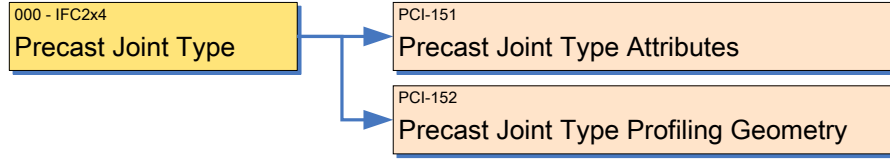
# IFC Model View Definition Diagram : Precast Joint IFC2x4

| VIEW ID | VIEW NAME        | APPLICATION NAME | APP. VERSION | EXCHANGE TYPE | DIAGRAM STATUS | DIAGRAM VERSION | DIAGRAM DATE | DIAGRAM AUTHORS                               |
|---------|------------------|------------------|--------------|---------------|----------------|-----------------|--------------|---|
| PCI-001 | Precast Concrete | Generic          |              | Generic       | Proposal       | 4               | 12-Jan-10    | Rafael Sacks, Chuck Eastman and Ivan Panushev |



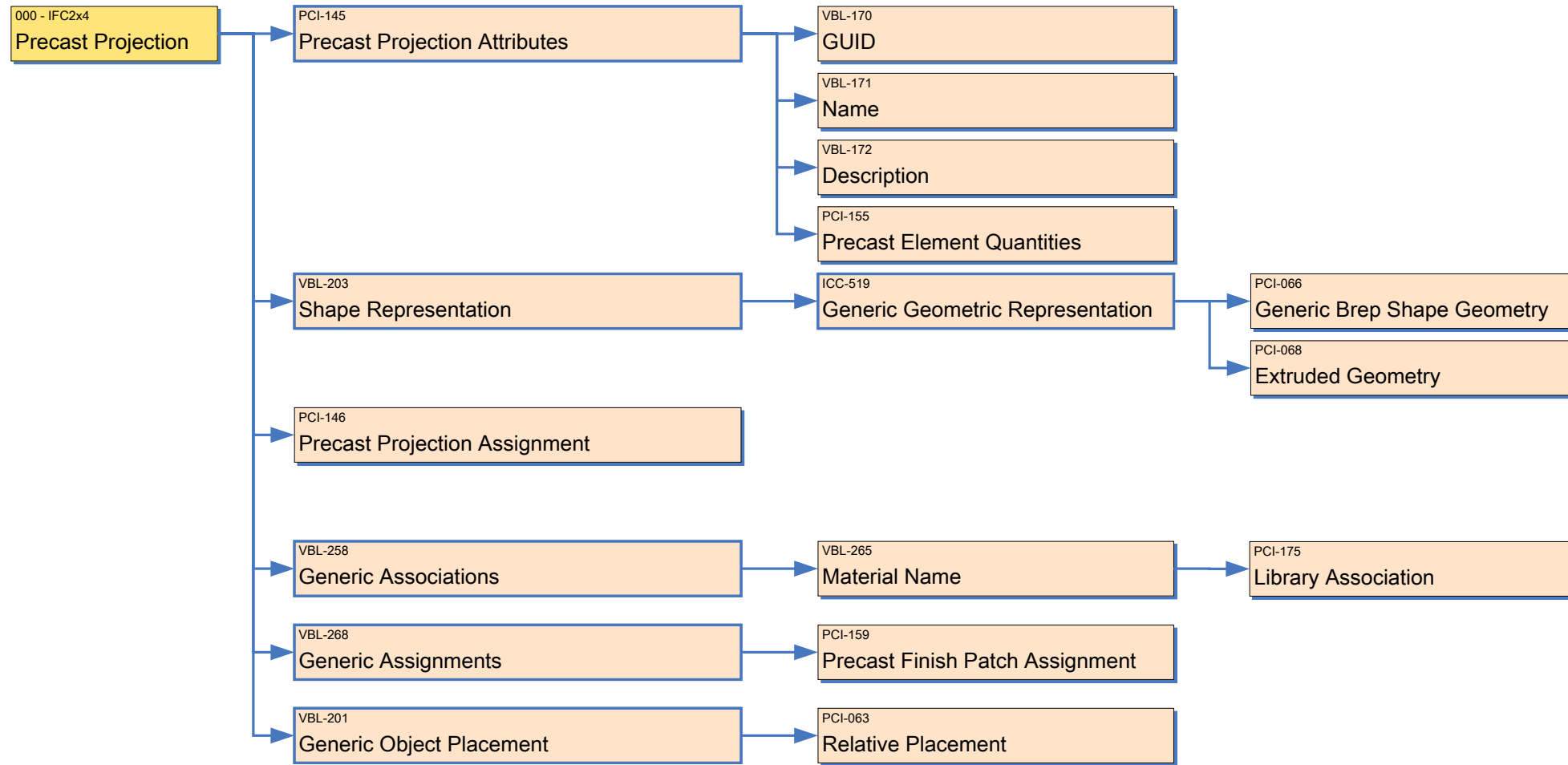
# IFC Model View Definition Diagram : Precast Joint Type IFC2x4

| VIEW ID | VIEW NAME        | APPLICATION NAME | APP. VERSION | EXCHANGE TYPE | DIAGRAM STATUS | DIAGRAM VERSION | DIAGRAM DATE | DIAGRAM AUTHORS                               |
|---------|------------------|------------------|--------------|---------------|----------------|-----------------|--------------|---|
| PCI-001 | Precast Concrete | Generic          |              | Generic       | Proposal       | 4               | 12-Jan-10    | Rafael Sacks, Chuck Eastman and Ivan Panushev |



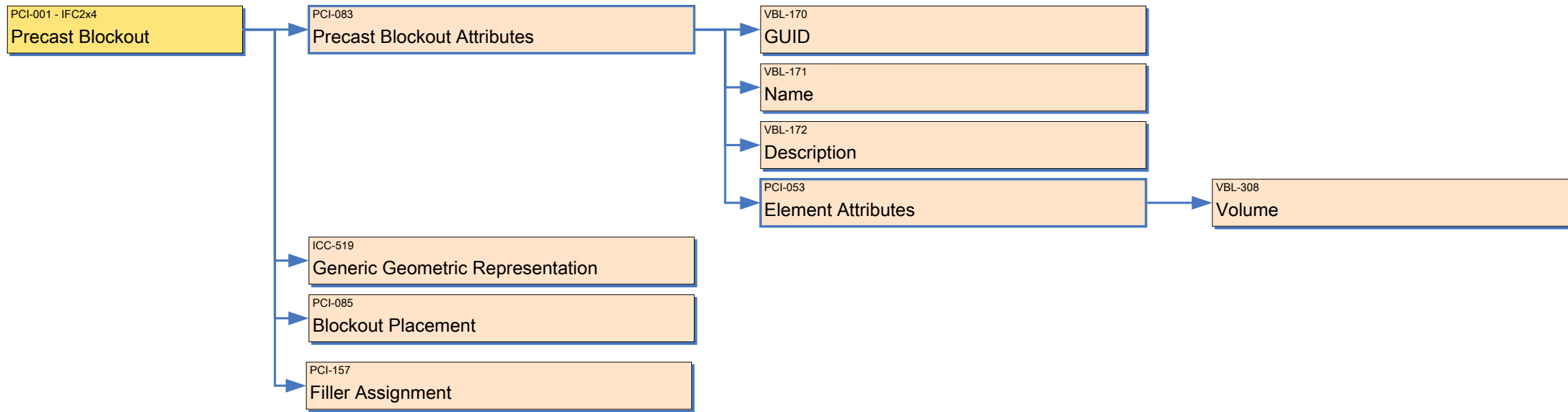
IFC Model View Definition Diagram : Precast Projection IFC2x4

| VIEW ID | VIEW NAME        | APPLICATION NAME | APP. VERSION | EXCHANGE TYPE | DIAGRAM STATUS | DIAGRAM VERSION | DIAGRAM DATE | DIAGRAM AUTHORS                               |
|---------|------------------|------------------|--------------|---------------|----------------|-----------------|--------------|---|
| PCI-001 | Precast Concrete | Generic          |              | Generic       | Proposal       | 4               | 12-Jan-10    | Rafael Sacks, Chuck Eastman and Ivan Panushev |



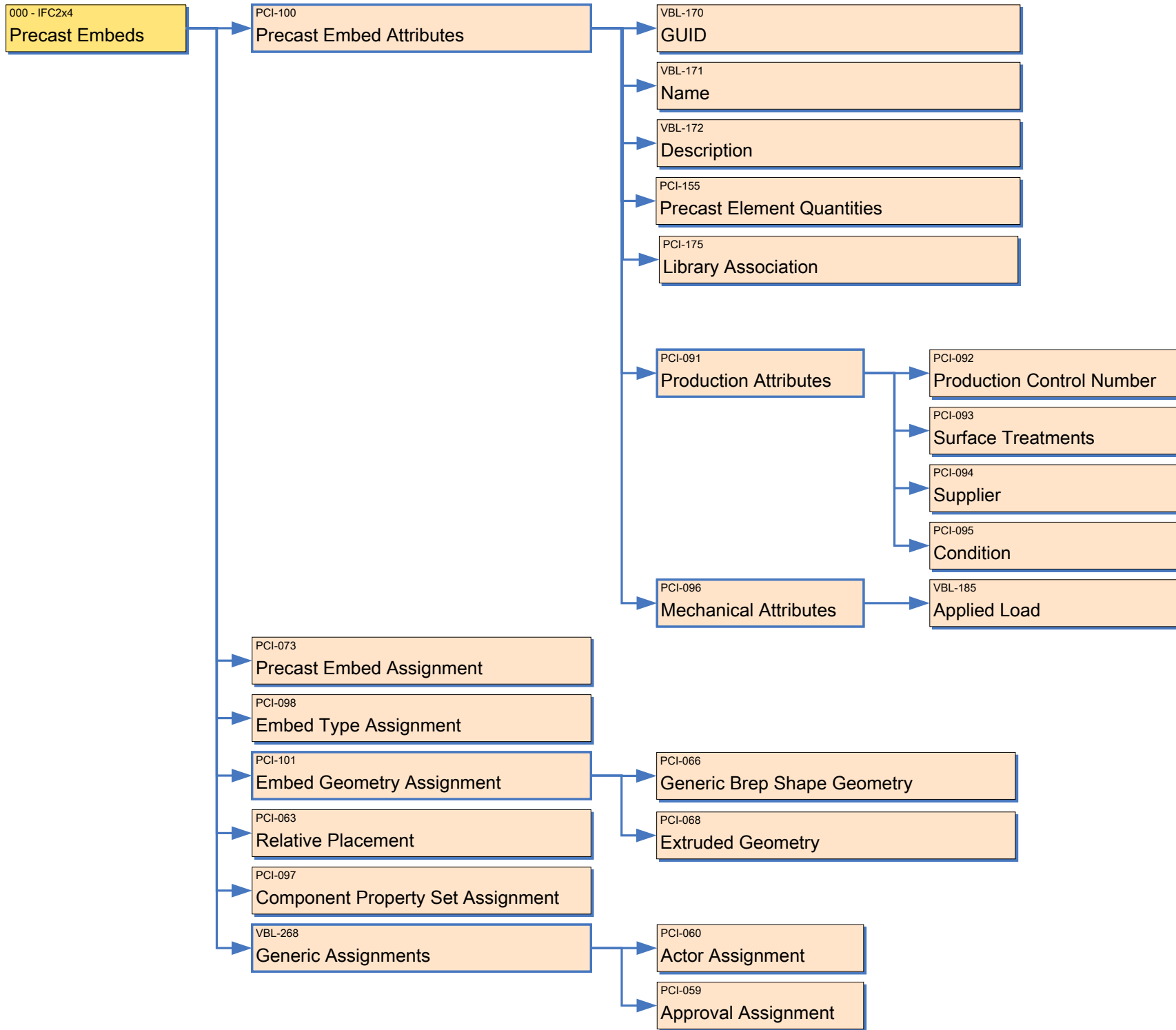
# IFC Model View Definition Diagram : Precast Blockout IFC2x4

| VIEW ID | VIEW NAME        | APPLICATION NAME | APP. VERSION | EXCHANGE TYPE | DIAGRAM STATUS | DIAGRAM VERSION | DIAGRAM DATE | DIAGRAM AUTHORS                               |
|---------|------------------|------------------|--------------|---------------|----------------|-----------------|--------------|---|
| PCI-001 | Precast Concrete | Generic          |              | Generic       | Proposal       | 4               | 12-Jan-10    | Rafael Sacks, Chuck Eastman and Ivan Panushev |



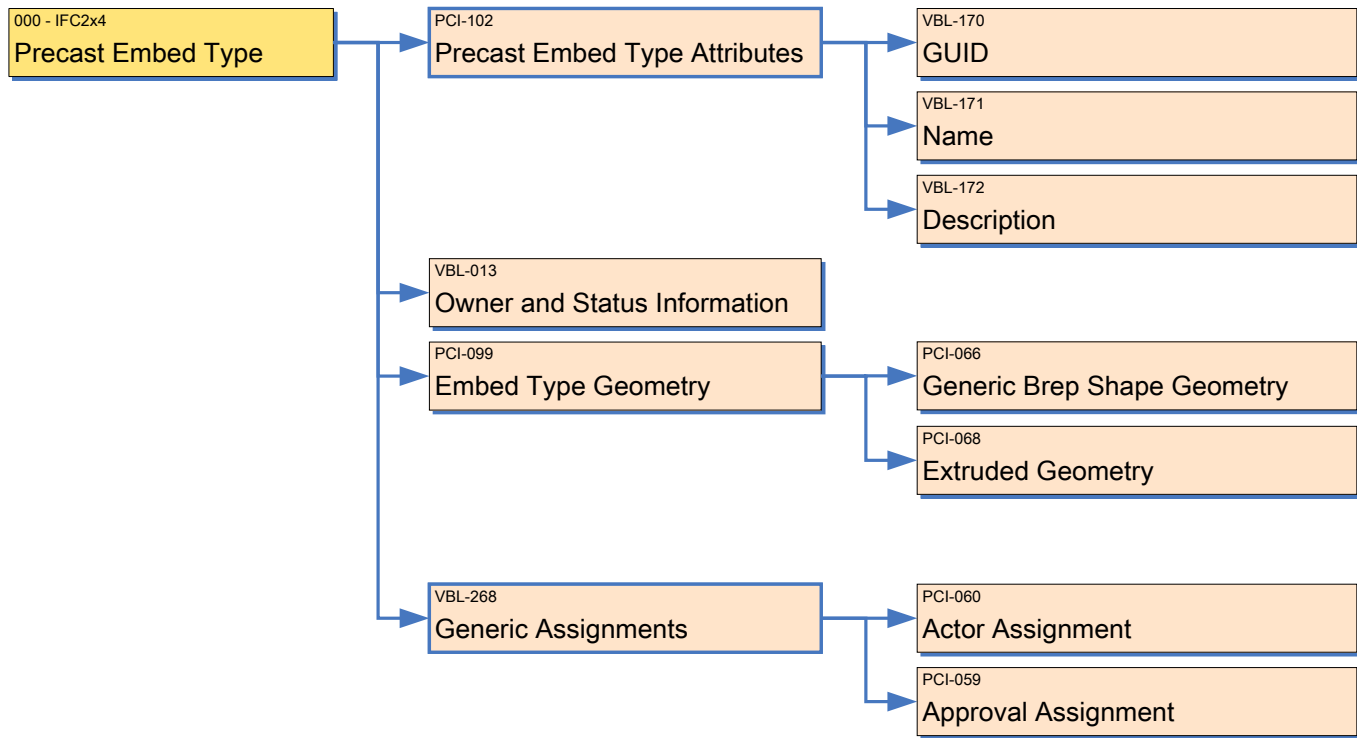
IFC Model View Definition Diagram : Precast Embeds IFC2x4

| VIEW ID | VIEW NAME        | APPLICATION NAME | APP. VERSION | EXCHANGE TYPE | DIAGRAM STATUS | DIAGRAM VERSION | DIAGRAM DATE | DIAGRAM AUTHORS                               |
|---------|------------------|------------------|--------------|---------------|----------------|-----------------|--------------|---|
| PCI-001 | Precast Concrete | Generic          |              | Generic       | Proposal       | 4               | 12-Jan-10    | Rafael Sacks, Chuck Eastman and Ivan Panushev |



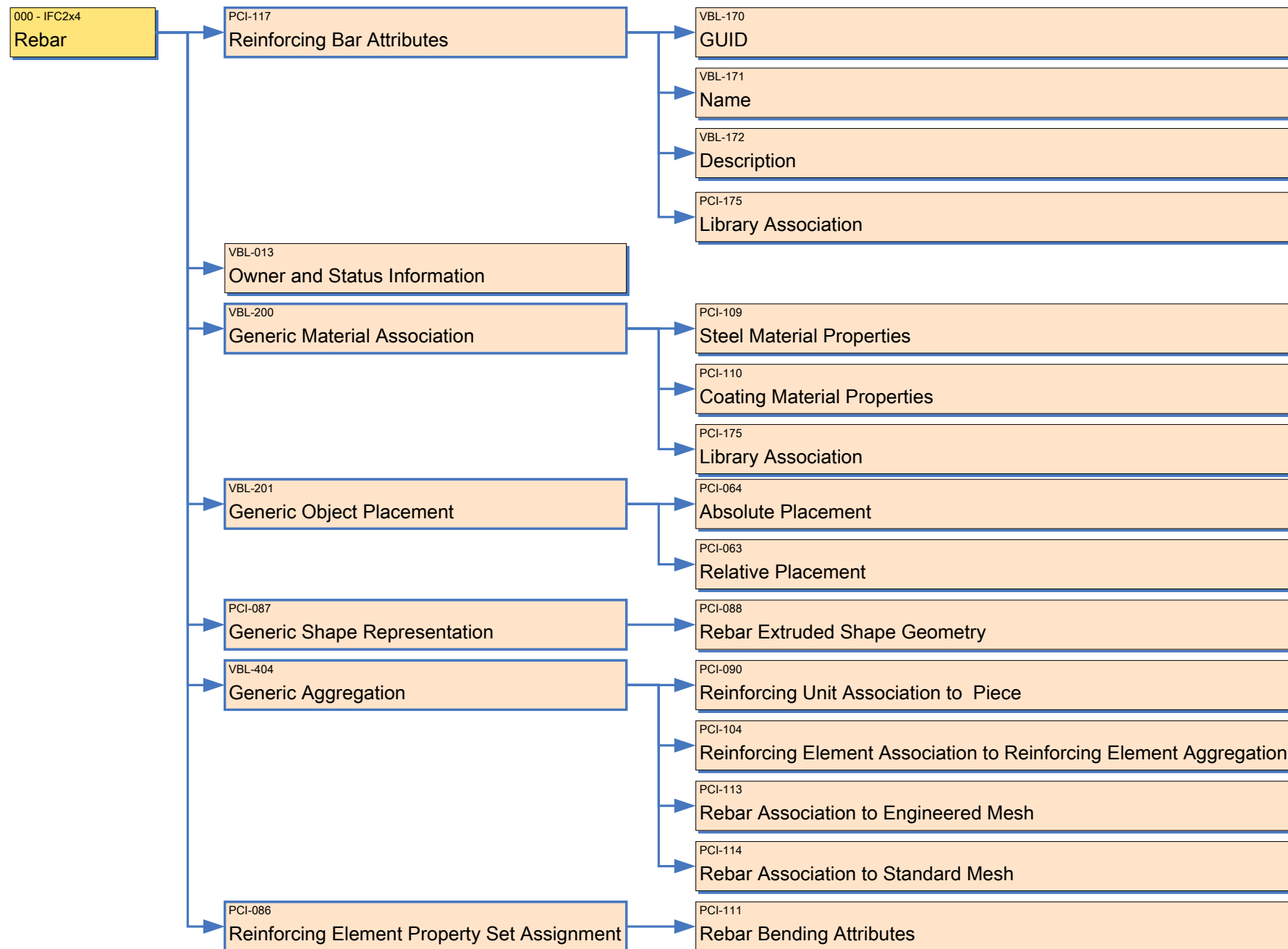
# IFC Model View Definition Diagram : Precast Embed Type IFC2x4

| VIEW ID | VIEW NAME        | APPLICATION NAME | APP. VERSION | EXCHANGE TYPE | DIAGRAM STATUS | DIAGRAM VERSION | DIAGRAM DATE | DIAGRAM AUTHORS                               |
|---------|------------------|------------------|--------------|---------------|----------------|-----------------|--------------|---|
| PCI-001 | Precast Concrete | Generic          |              | Generic       | Proposal       | 4               | 12-Jan-10    | Rafael Sacks, Chuck Eastman and Ivan Panushev |



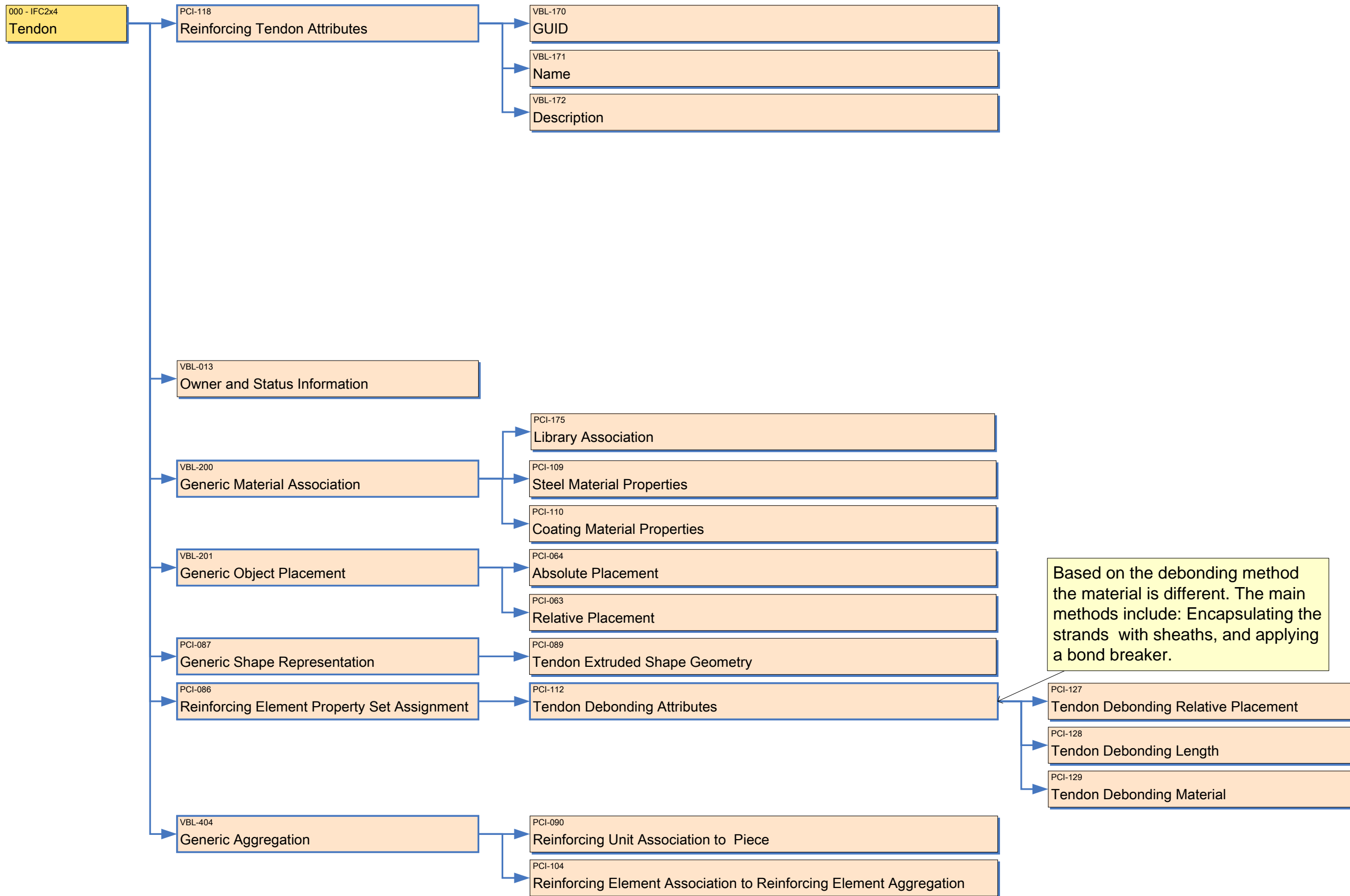
IFC Model View Definition Diagram : Rebar IFC2x4

| VIEW ID | VIEW NAME        | APPLICATION NAME | APP. VERSION | EXCHANGE TYPE | DIAGRAM STATUS | DIAGRAM VERSION | DIAGRAM DATE | DIAGRAM AUTHORS                               |
|---------|------------------|------------------|--------------|---------------|----------------|-----------------|--------------|---|
| PCI-001 | Precast Concrete | Generic          |              | Generic       | Proposal       | 4               | 12-Jan-10    | Rafael Sacks, Chuck Eastman and Ivan Panushev |



IFC Model View Definition Diagram : Tendon IFC2x4

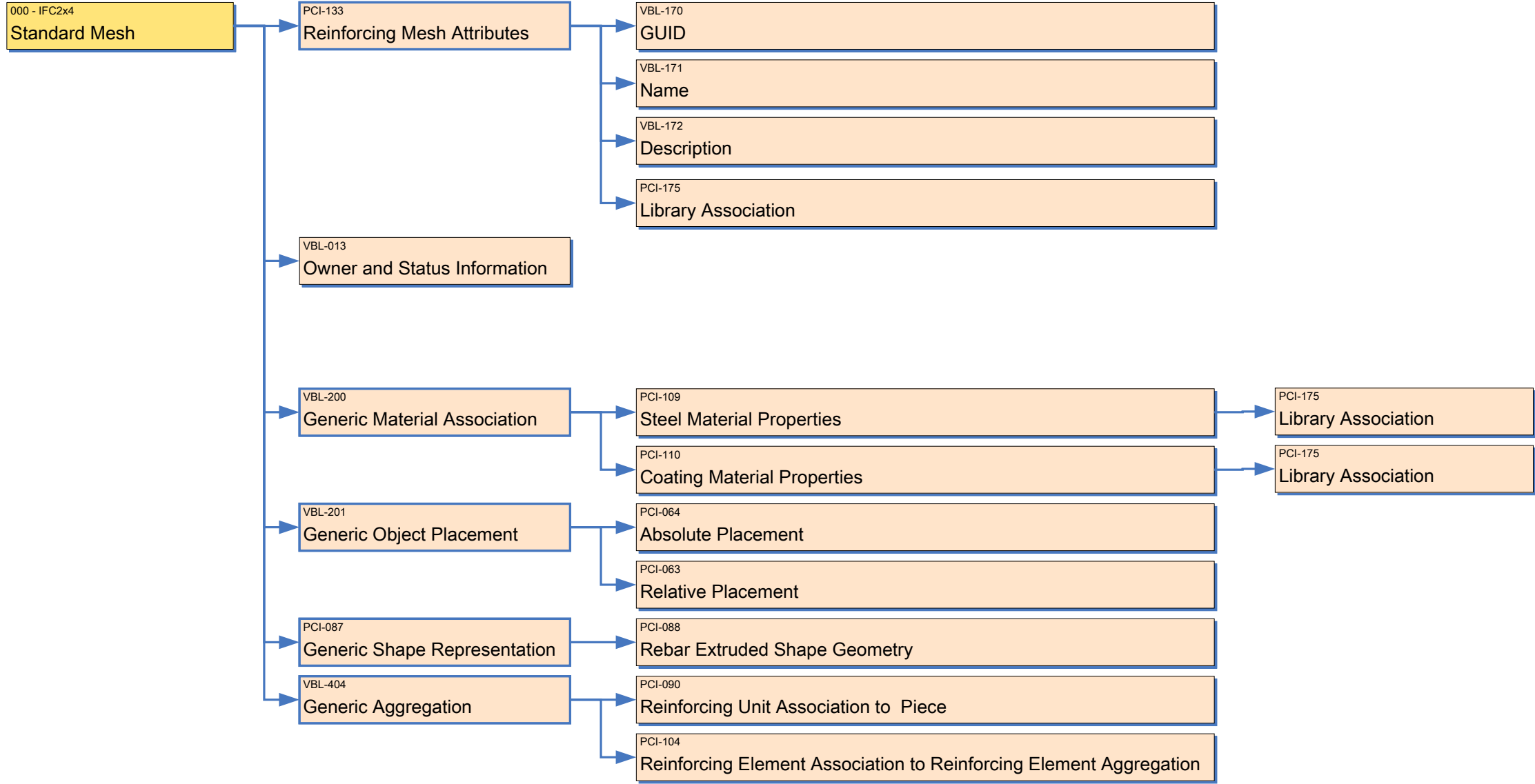
| VIEW ID | VIEW NAME        | APPLICATION NAME | APP. VERSION | EXCHANGE TYPE | DIAGRAM STATUS | DIAGRAM VERSION | DIAGRAM DATE | DIAGRAM AUTHORS                               |
|---------|------------------|------------------|--------------|---------------|----------------|-----------------|--------------|---|
| PCI-001 | Precast Concrete | Generic          |              | Generic       | Proposal       | 4               | 12-Jan-10    | Rafael Sacks, Chuck Eastman and Ivan Panushev |



Based on the debonding method the material is different. The main methods include: Encapsulating the strands with sheaths, and applying a bond breaker.

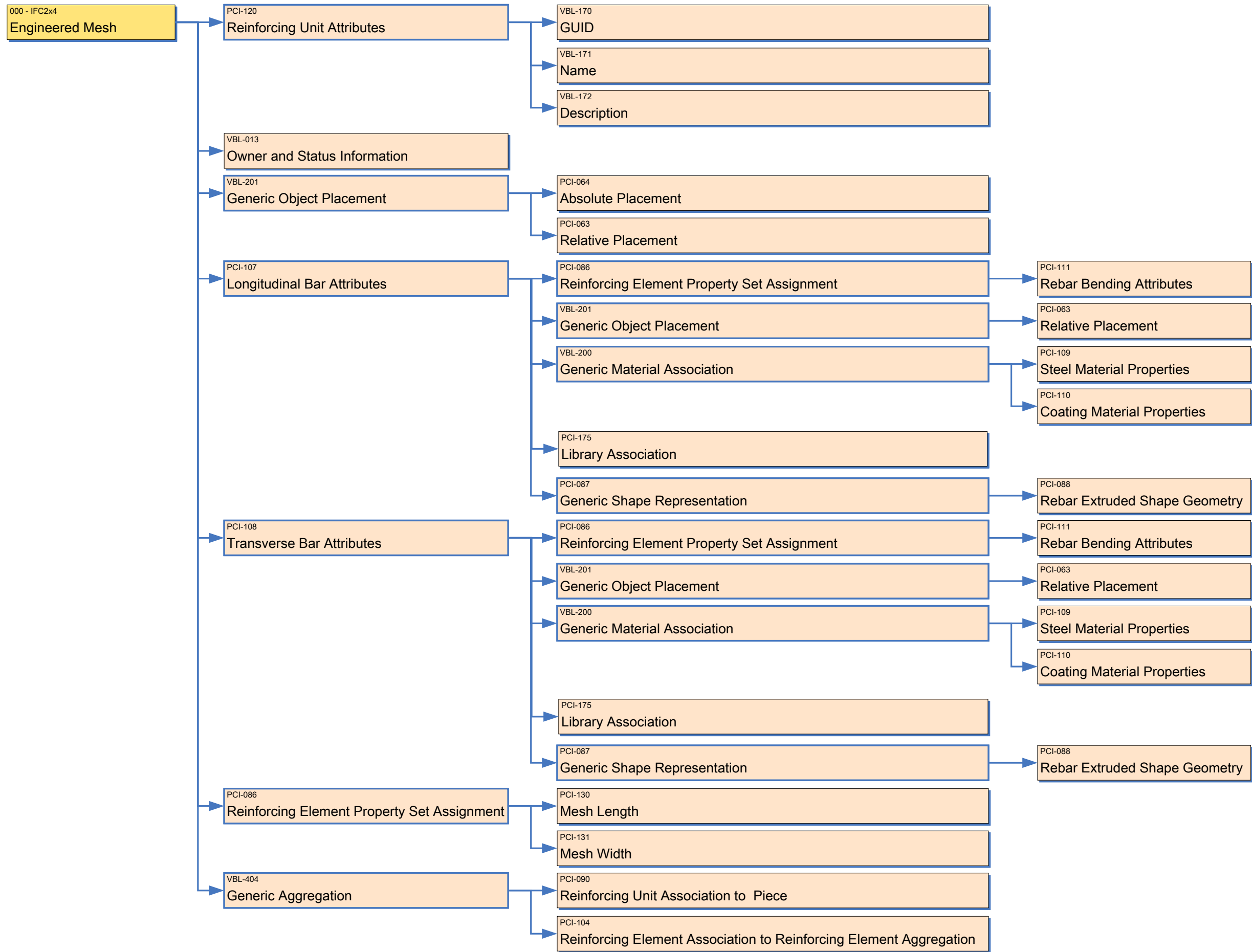
IFC Model View Definition Diagram : Standard Mesh IFC2x4

| VIEW ID | VIEW NAME        | APPLICATION NAME | APP. VERSION | EXCHANGE TYPE | DIAGRAM STATUS | DIAGRAM VERSION | DIAGRAM DATE | DIAGRAM AUTHORS                               |
|---------|------------------|------------------|--------------|---------------|----------------|-----------------|--------------|---|
| PCI-001 | Precast Concrete | Generic          |              | Generic       | Proposal       | 4               | 12-Jan-10    | Rafael Sacks, Chuck Eastman and Ivan Panushev |



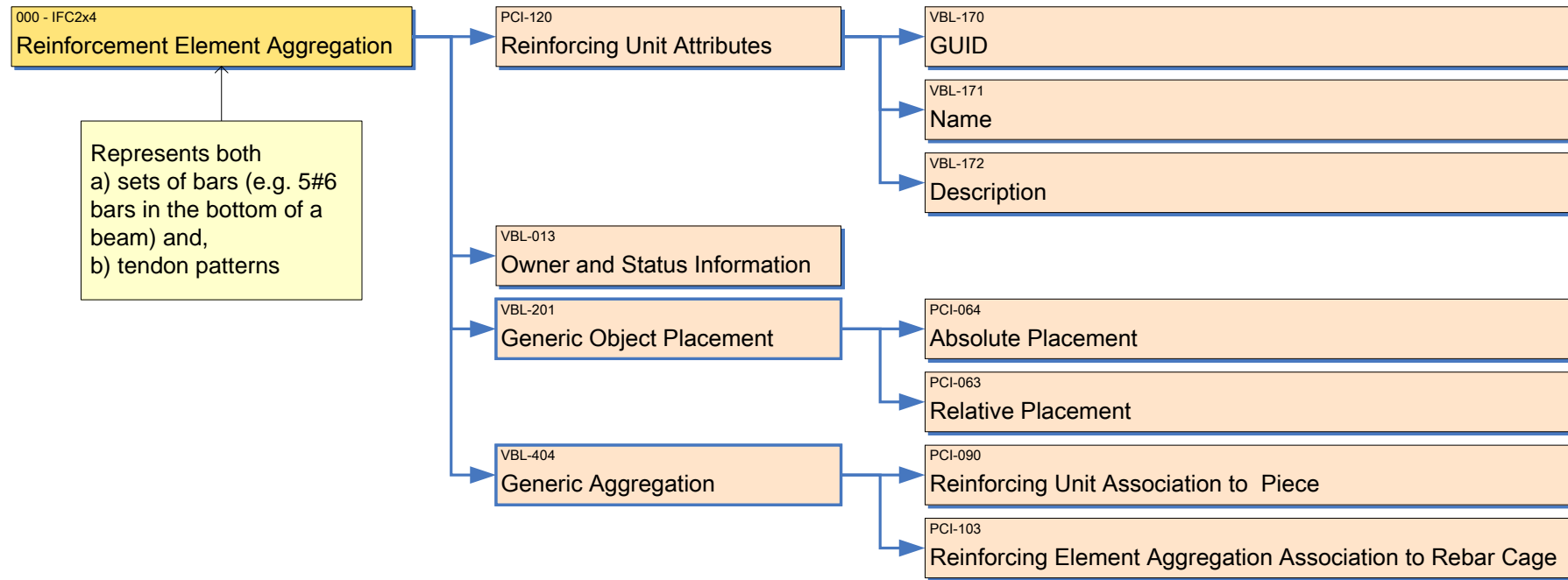
IFC Model View Definition Diagram : Engineered Mesh IFC2x4

| VIEW ID | VIEW NAME        | APPLICATION NAME | APP. VERSION | EXCHANGE TYPE | DIAGRAM STATUS | DIAGRAM VERSION | DIAGRAM DATE | DIAGRAM AUTHORS                               |
|---------|------------------|------------------|--------------|---------------|----------------|-----------------|--------------|---|
| PCI-001 | Precast Concrete | Generic          |              | Generic       | Proposal       | 4               | 12-Jan-10    | Rafael Sacks, Chuck Eastman and Ivan Panushev |



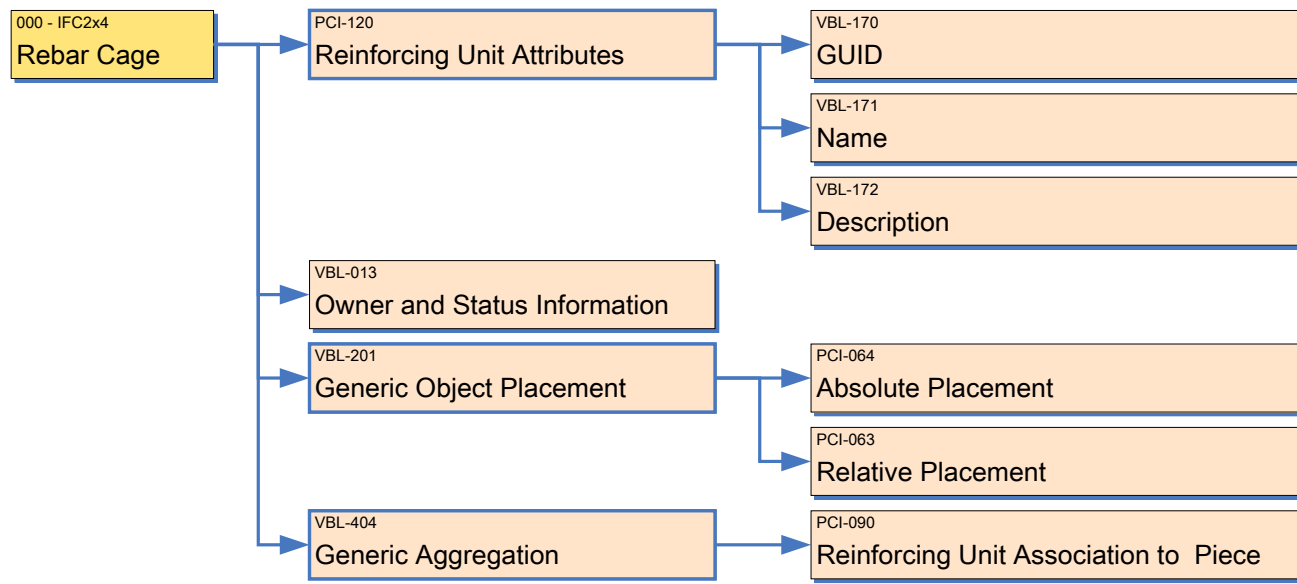
IFC Model View Definition Diagram : Reinforcement Element Aggregation IFC2x4

| VIEW ID | VIEW NAME        | APPLICATION NAME | APP. VERSION | EXCHANGE TYPE | DIAGRAM STATUS | DIAGRAM VERSION | DIAGRAM DATE | DIAGRAM AUTHORS                               |
|---------|------------------|------------------|--------------|---------------|----------------|-----------------|--------------|---|
| PCI-001 | Precast Concrete | Generic          |              | Generic       | Proposal       | 4               | 12-Jan-10    | Rafael Sacks, Chuck Eastman and Ivan Panushev |



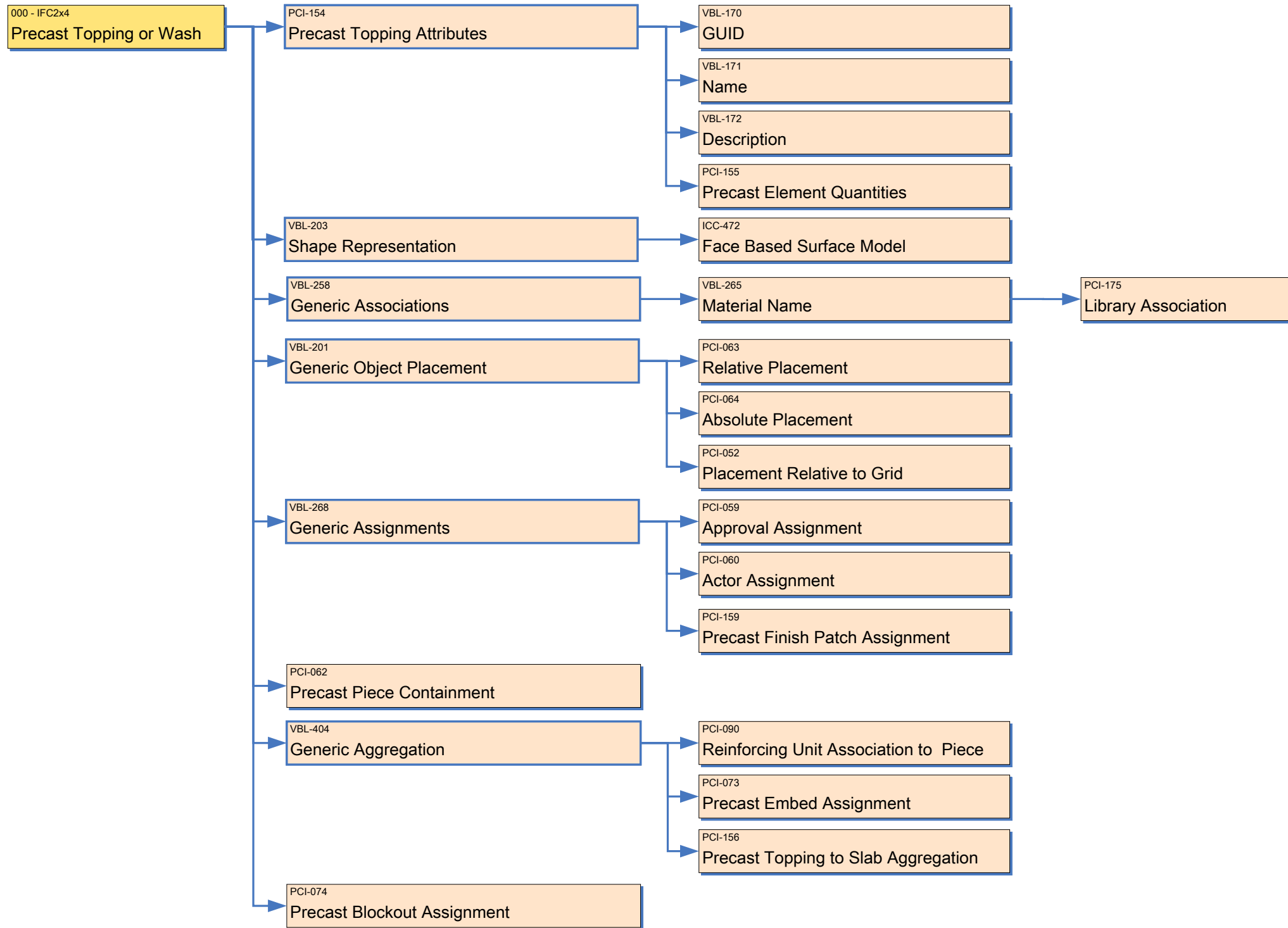
# IFC Model View Definition Diagram : Rebar Cage IFC2x4

| VIEW ID | VIEW NAME        | APPLICATION NAME | APP. VERSION | EXCHANGE TYPE | DIAGRAM STATUS | DIAGRAM VERSION | DIAGRAM DATE | DIAGRAM AUTHORS                               |
|---------|------------------|------------------|--------------|---------------|----------------|-----------------|--------------|---|
| PCI-001 | Precast Concrete | Generic          |              | Generic       | Proposal       | 4               | 12-Jan-10    | Rafael Sacks, Chuck Eastman and Ivan Panushev |



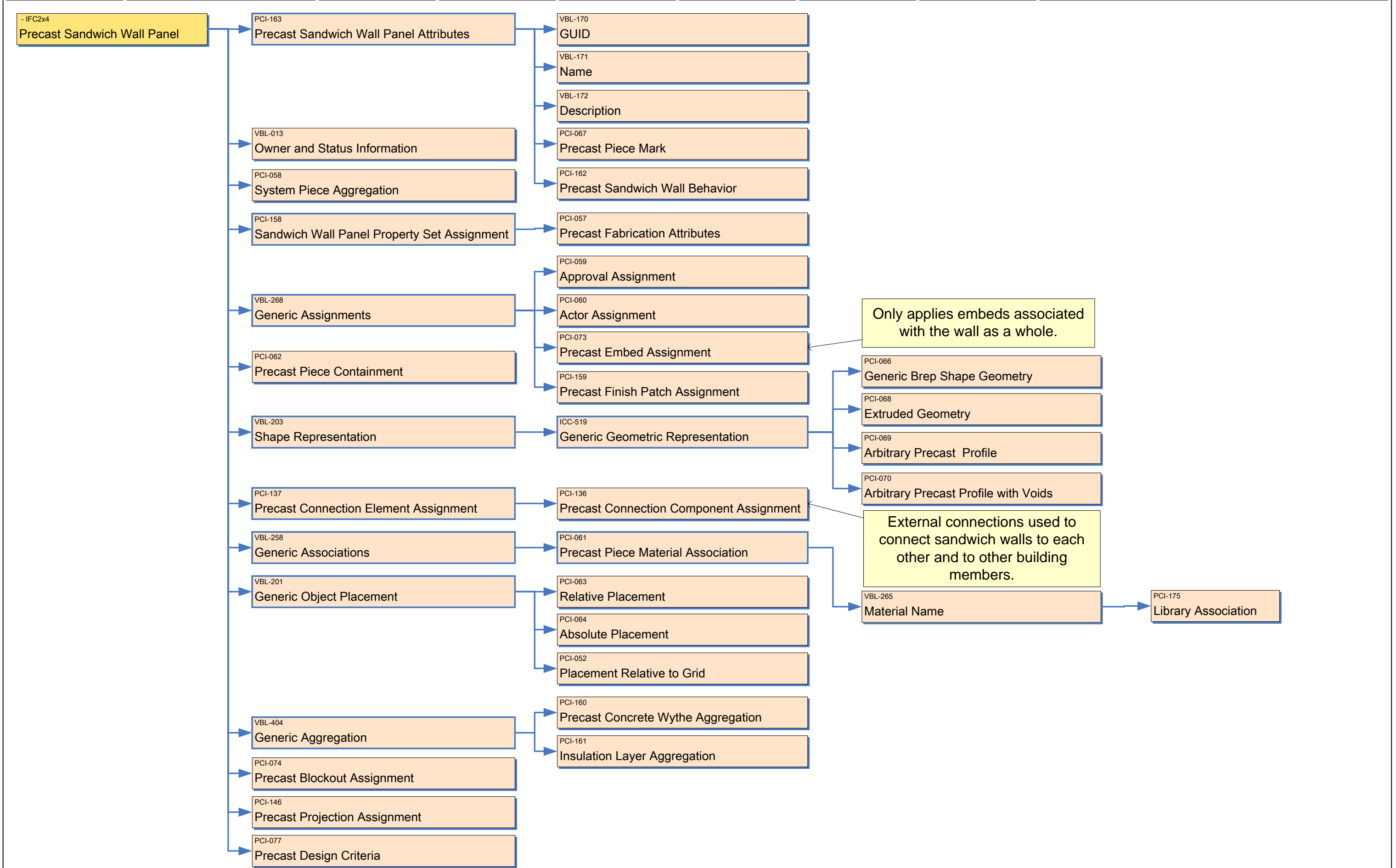
IFC Model View Definition Diagram : Precast Topping or Wash IFC2x4

| VIEW ID | VIEW NAME        | APPLICATION NAME | APP. VERSION | EXCHANGE TYPE | DIAGRAM STATUS | DIAGRAM VERSION | DIAGRAM DATE | DIAGRAM AUTHORS                               |
|---------|------------------|------------------|--------------|---------------|----------------|-----------------|--------------|---|
| PCI-001 | Precast Concrete | Generic          |              | Generic       | Proposal       | 4               | 12-Jan-10    | Rafael Sacks, Chuck Eastman and Ivan Panushev |



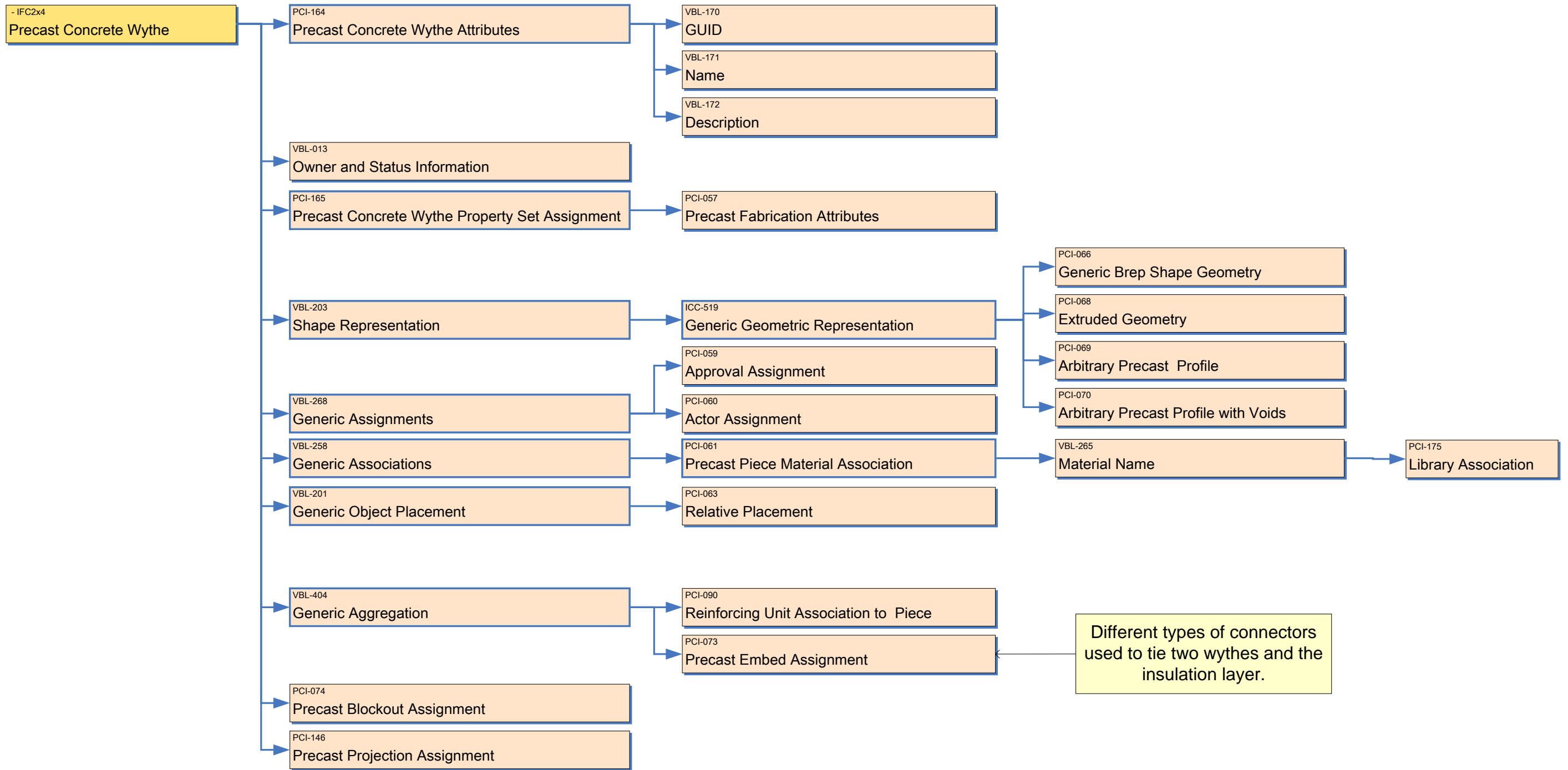
# IFC Model View Definition Diagram : Precast Sandwich Wall Panel IFC2x4

| VIEW ID | VIEW NAME        | APPLICATION NAME | APP. VERSION | EXCHANGE TYPE | DIAGRAM STATUS | DIAGRAM VERSION | DIAGRAM DATE | DIAGRAM AUTHORS                               |
|---------|------------------|------------------|--------------|---------------|----------------|-----------------|--------------|---|
| PCI-001 | Precast Concrete | Generic          |              | Generic       | Proposal       | 4               | 12-Jan-10    | Rafael Sacks, Chuck Eastman and Ivan Panushev |



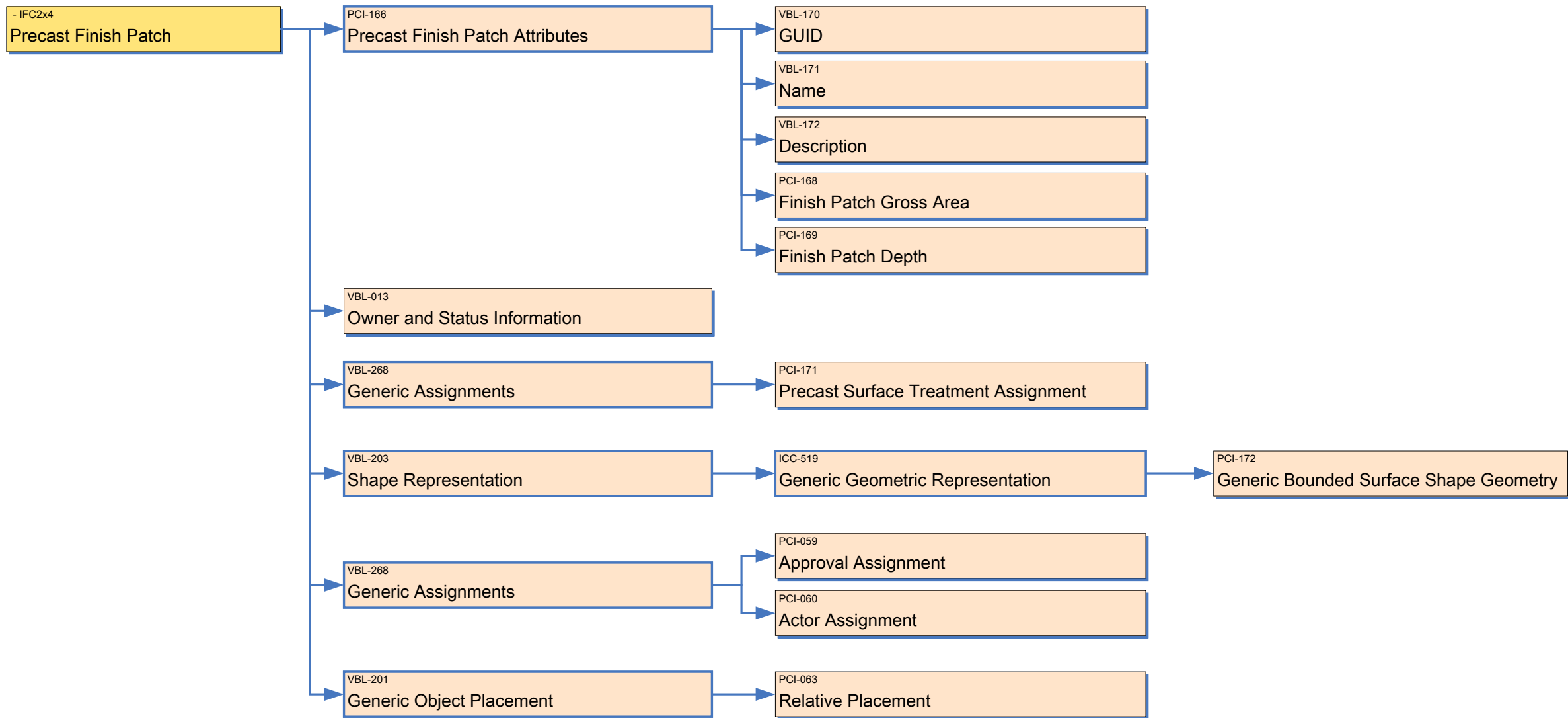
# IFC Model View Definition Diagram : Precast Concrete Wythe IFC2x4

| VIEW ID | VIEW NAME        | APPLICATION NAME | APP. VERSION | EXCHANGE TYPE | DIAGRAM STATUS | DIAGRAM VERSION | DIAGRAM DATE | DIAGRAM AUTHORS                               |
|---------|------------------|------------------|--------------|---------------|----------------|-----------------|--------------|---|
| PCI-001 | Precast Concrete | Generic          |              | Generic       | Proposal       | 4               | 12-Jan-10    | Rafael Sacks, Chuck Eastman and Ivan Panushev |



# IFC Model View Definition Diagram : Precast Finish Patch IFC2x4

| VIEW ID | VIEW NAME        | APPLICATION NAME | APP. VERSION | EXCHANGE TYPE | DIAGRAM STATUS | DIAGRAM VERSION | DIAGRAM DATE | DIAGRAM AUTHORS                               |
|---------|------------------|------------------|--------------|---------------|----------------|-----------------|--------------|---|
| PCI-001 | Precast Concrete | Generic          |              | Generic       | Proposal       | 4               | 12-Jan-10    | Rafael Sacks, Chuck Eastman and Ivan Panushev |



# IFC Model View Definition Diagram : Precast Surface Treatment IFC2x4

| VIEW ID | VIEW NAME        | APPLICATION NAME | APP. VERSION | EXCHANGE TYPE | DIAGRAM STATUS | DIAGRAM VERSION | DIAGRAM DATE | DIAGRAM AUTHORS                               |
|---------|------------------|------------------|--------------|---------------|----------------|-----------------|--------------|---|
| PCI-001 | Precast Concrete | Generic          |              | Generic       | Proposal       | 4               | 12-Jan-10    | Rafael Sacks, Chuck Eastman and Ivan Panushev |

